

COMMUNITY RISK ASSESSMENT AND STANDARDS OF COVER ANALYSIS

VOLUME 2 OF 2: MAP ATLAS

**SNOHOMISH COUNTY
FIRE DISTRICT #4**

SEPTEMBER 14, 2021



LEGEND

- FD 4 Stations
- Auto Aid Stations
- Engine
- Engine/Ladder
- Fire District #4
- City Boundaries

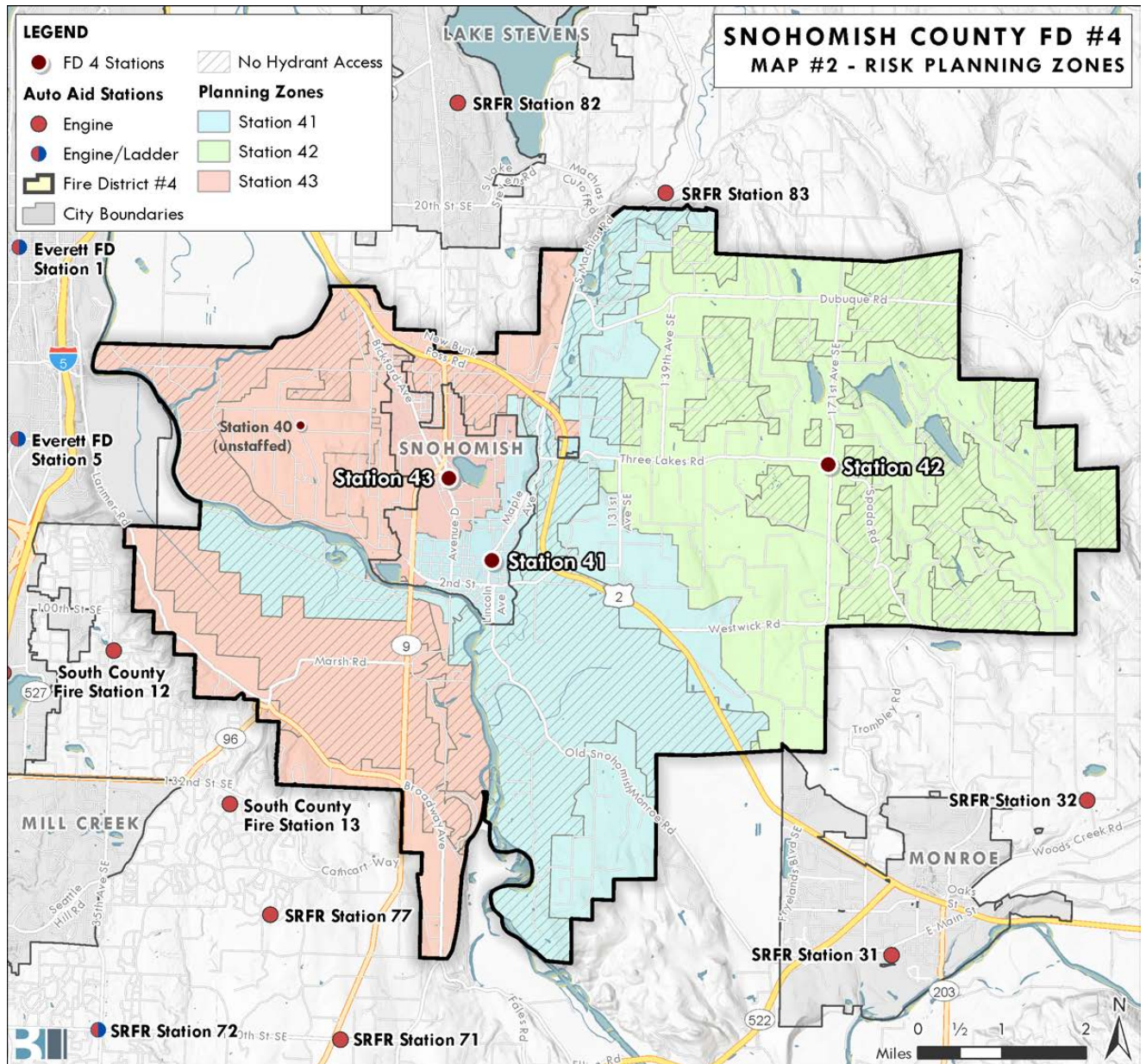
SNOHOMISH COUNTY FD #4
MAP #1 - GENERAL GEOGRAPHY

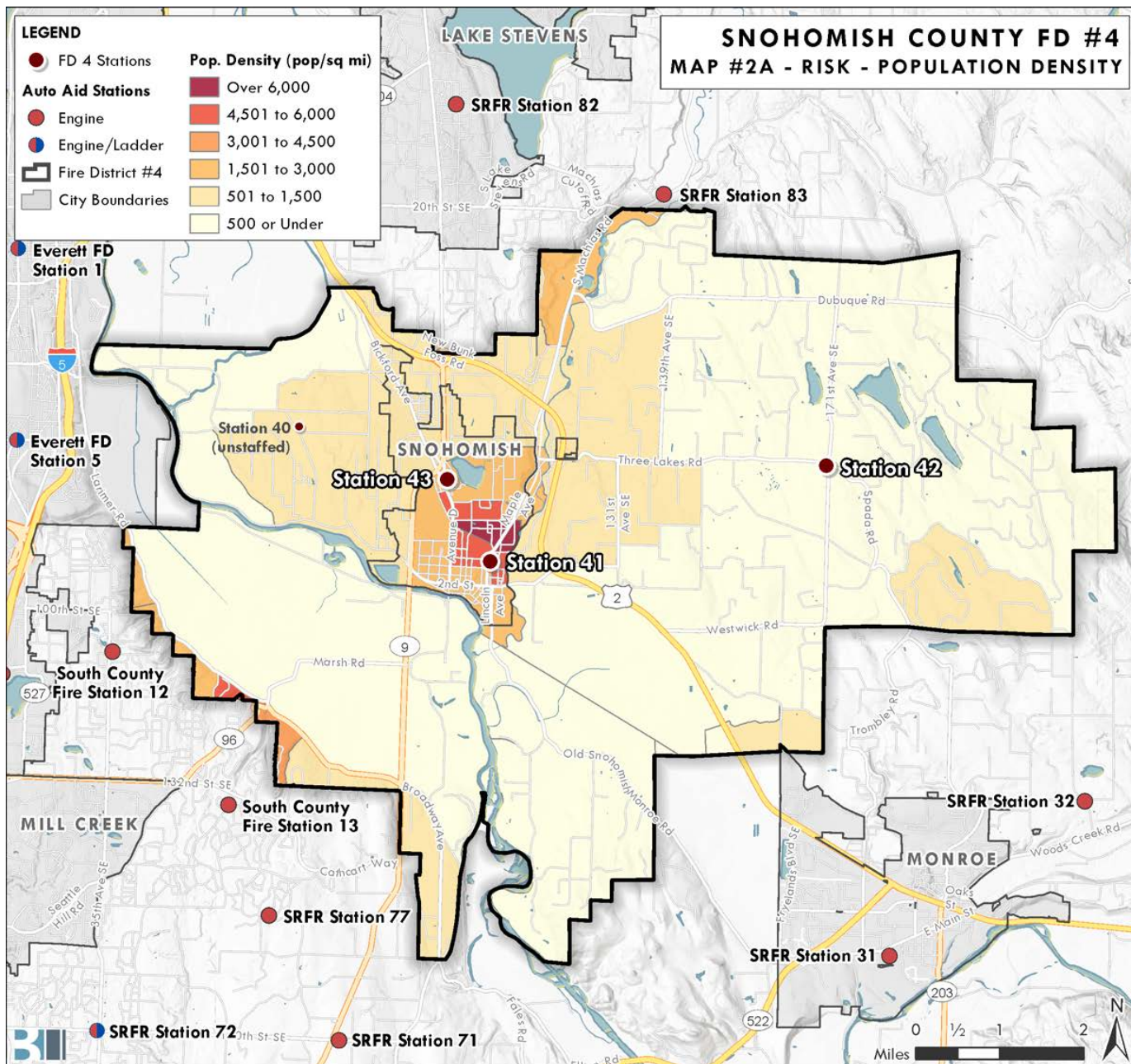
Map showing Fire District #4 (yellow) and City Boundaries (grey). Key locations include:

- SRFR Station 82
- SRFR Station 83
- Station 40 (unstaffed)
- Station 43
- Station 41
- Station 42
- SRFR Station 32
- SRFR Station 31
- SRFR Station 72
- SRFR Station 71
- SRFR Station 77
- South County Fire Station 13
- South County Fire Station 12
- Everett FD Station 5
- Everett FD Station 1

Major roads shown include SR 52, SR 96, SR 203, and SR 522. Water bodies include Lake Stevens and Mill Creek.



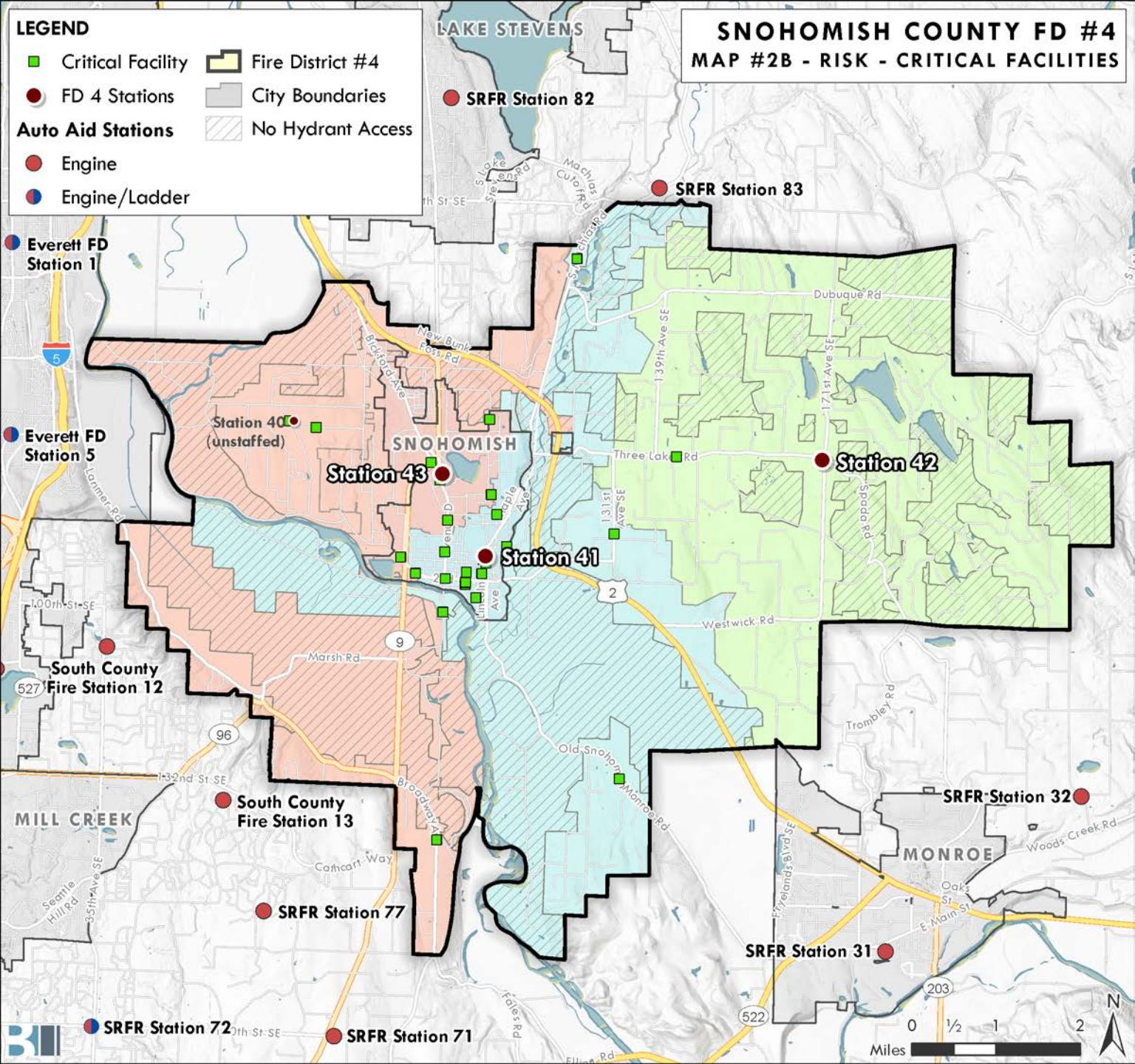




LEGEND

- Critical Facility
- FD 4 Stations
- Auto Aid Stations
- Engine
- Engine/Ladder
- Fire District #4
- City Boundaries
- No Hydrant Access

SNOHOMISH COUNTY FD #4
MAP #2B - RISK - CRITICAL FACILITIES



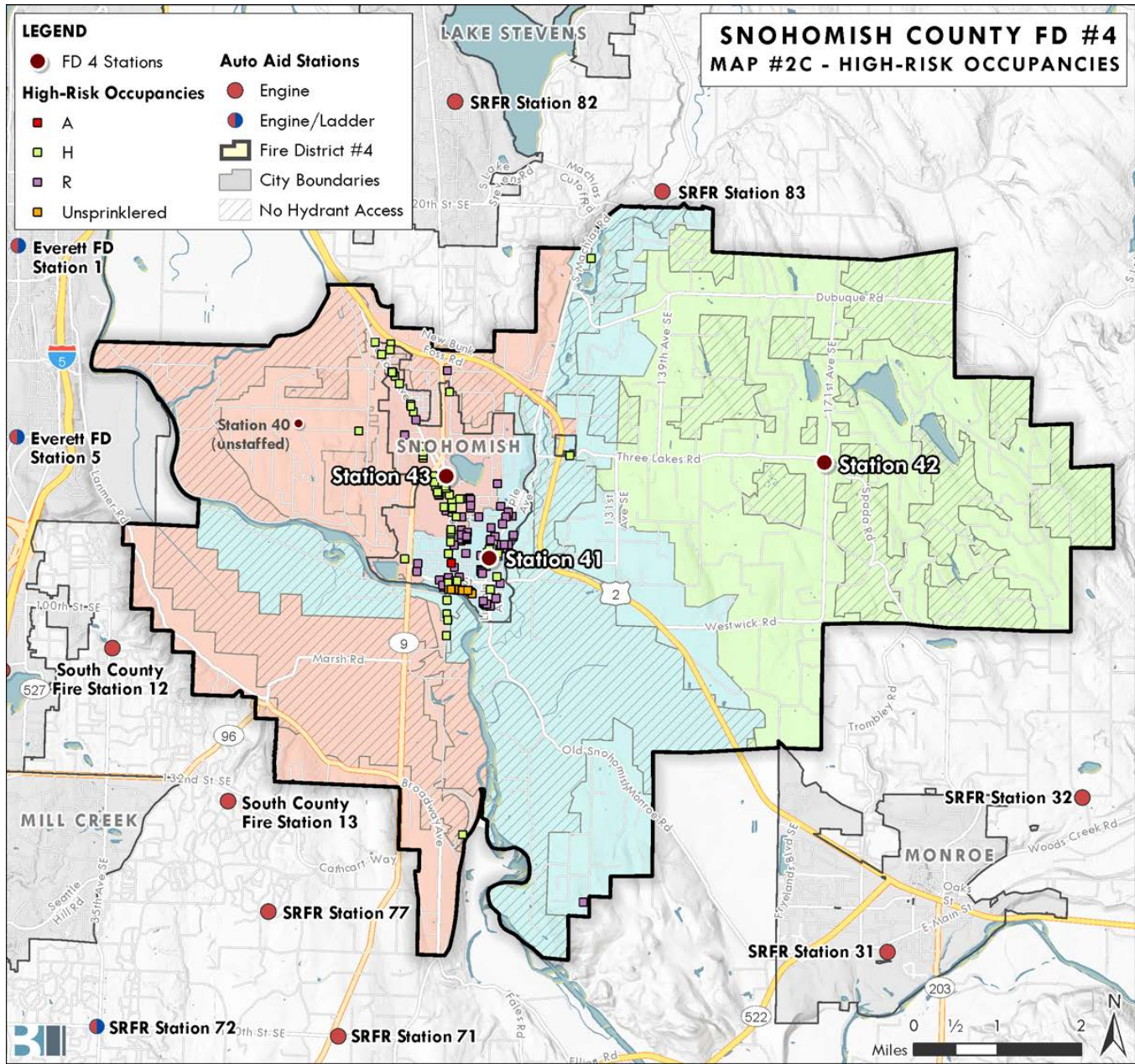
SNOHOMISH COUNTY FD #4 **MAP #2C - HIGH-RISK OCCUPANCIES**

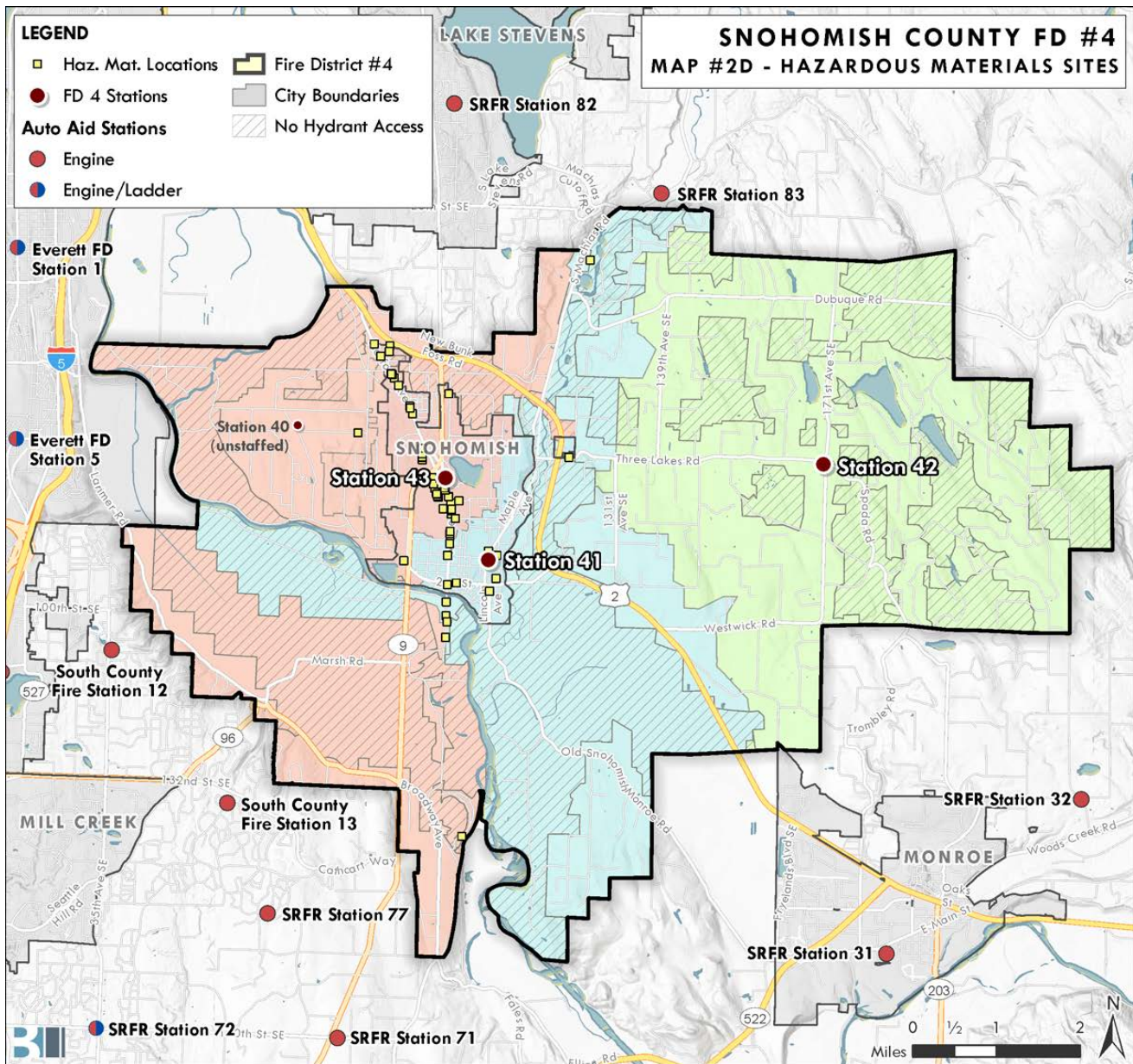
LEGEND

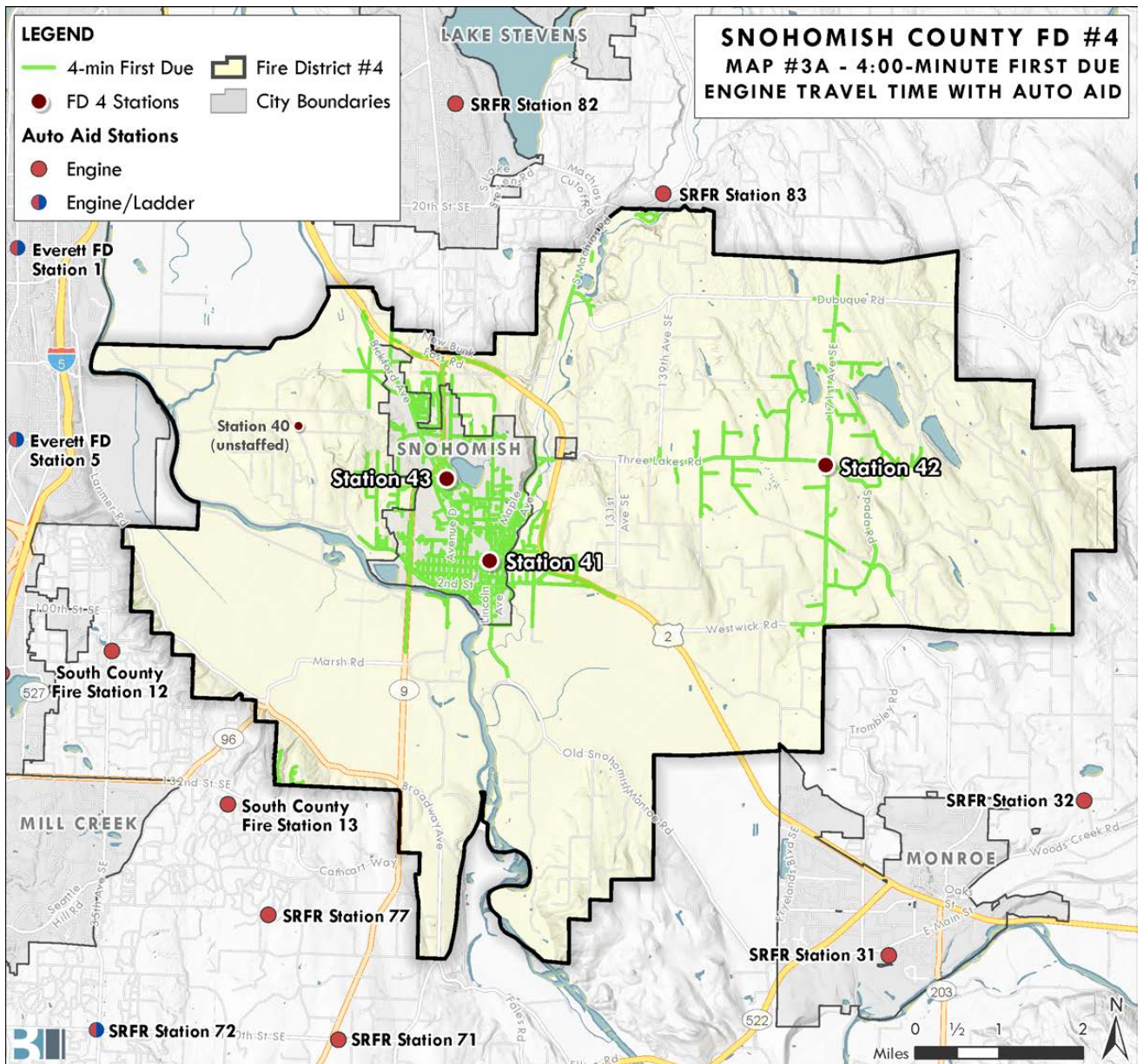
- FD 4 Stations
- A
- H
- R
- Unsprinklered

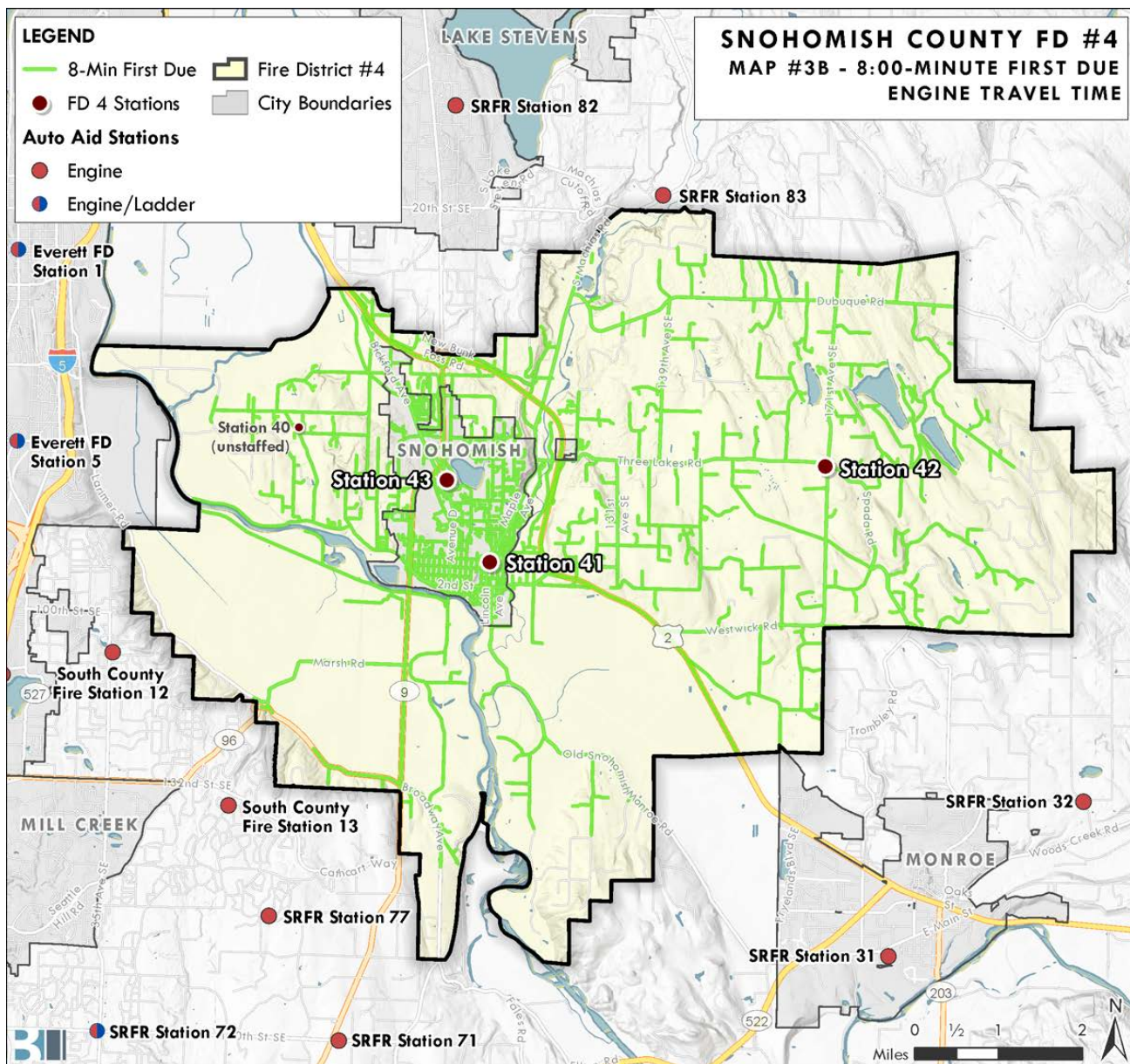
Auto Aid Stations

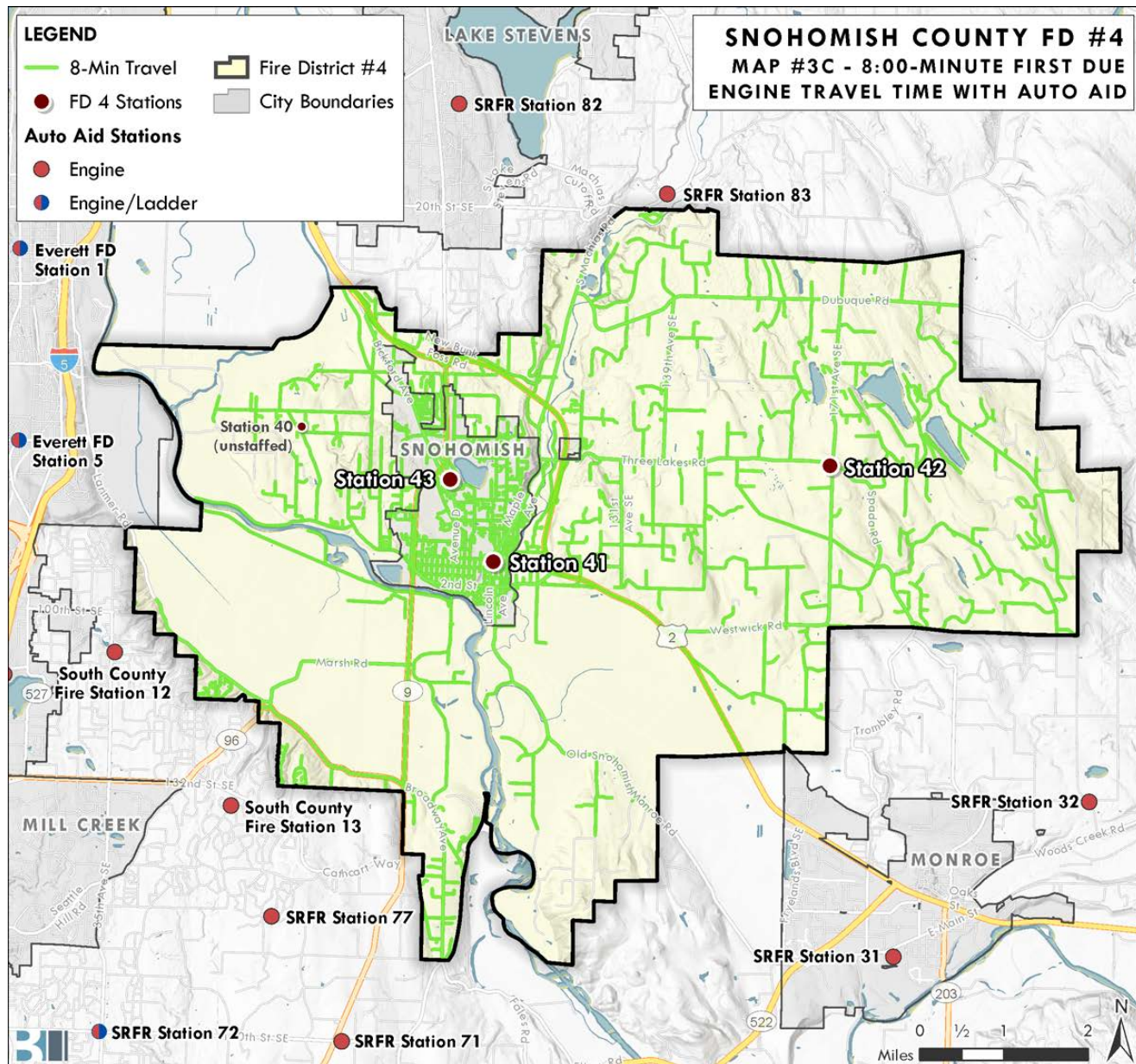
- Engine
- Engine/Ladder
- Fire District #4
- City Boundaries
- No Hydrant Access











LEGEND

- 4/8-Min Travel
- FD 4 Stations
- Auto Aid Stations
 - Engine
 - Engine/Ladder
- Fire District #4
- City Boundaries

**SNOHOMISH COUNTY FD #4
MAP #3D - 4:00/8:00-MINUTE FIRST
DUE ENGINE TRAVEL TIME**