

COMMUNITY RISK  
ASSESSMENT AND STANDARDS  
OF COVER ANALYSIS

VOLUME 2 OF 2: MAP ATLAS

SNOHOMISH COUNTY  
FIRE DISTRICT #4

FEBRUARY 24, 2023

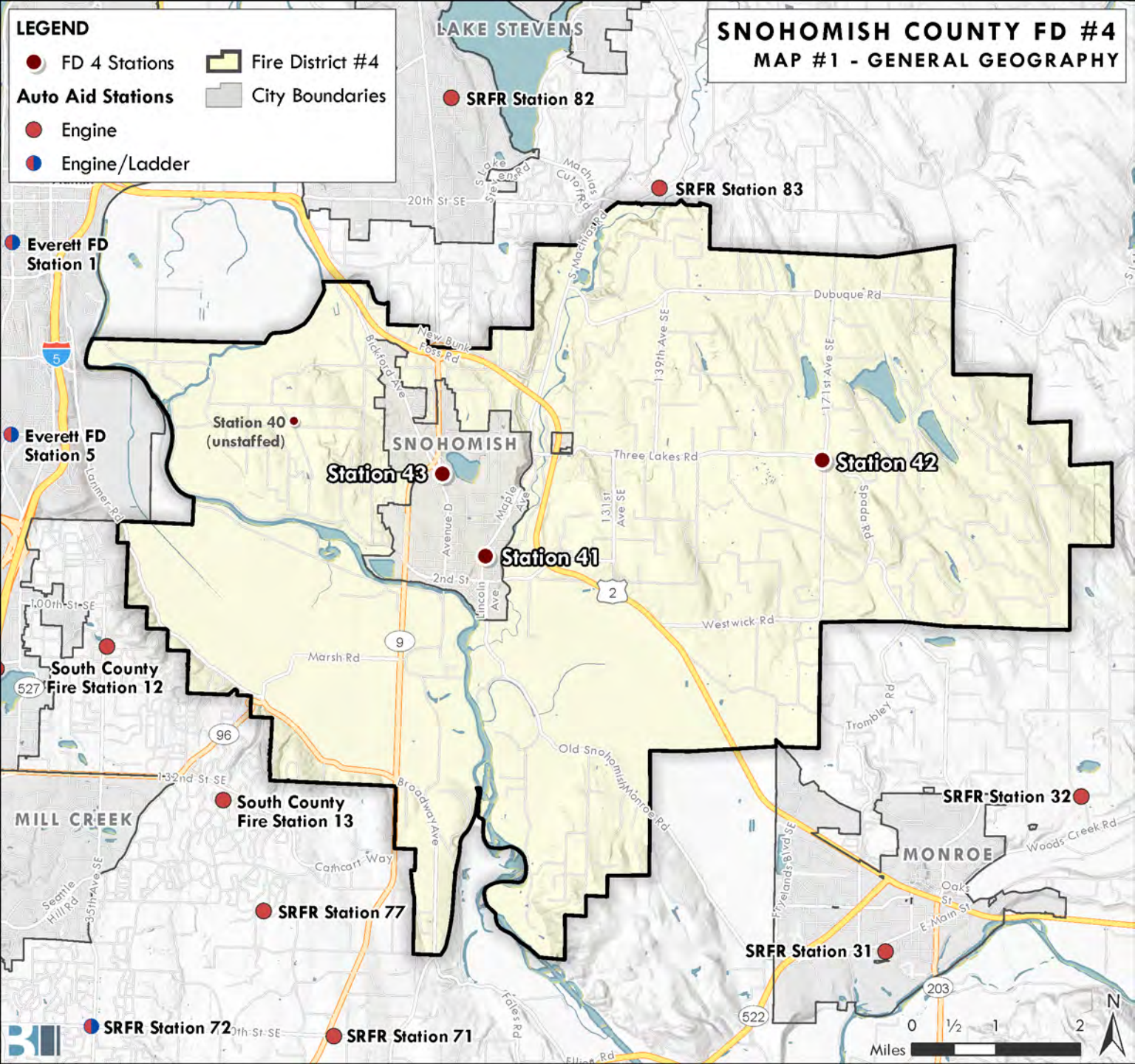




**LEGEND**

- FD 4 Stations
- Fire District #4
- Auto Aid Stations
- City Boundaries
- Engine
- Engine/Ladder

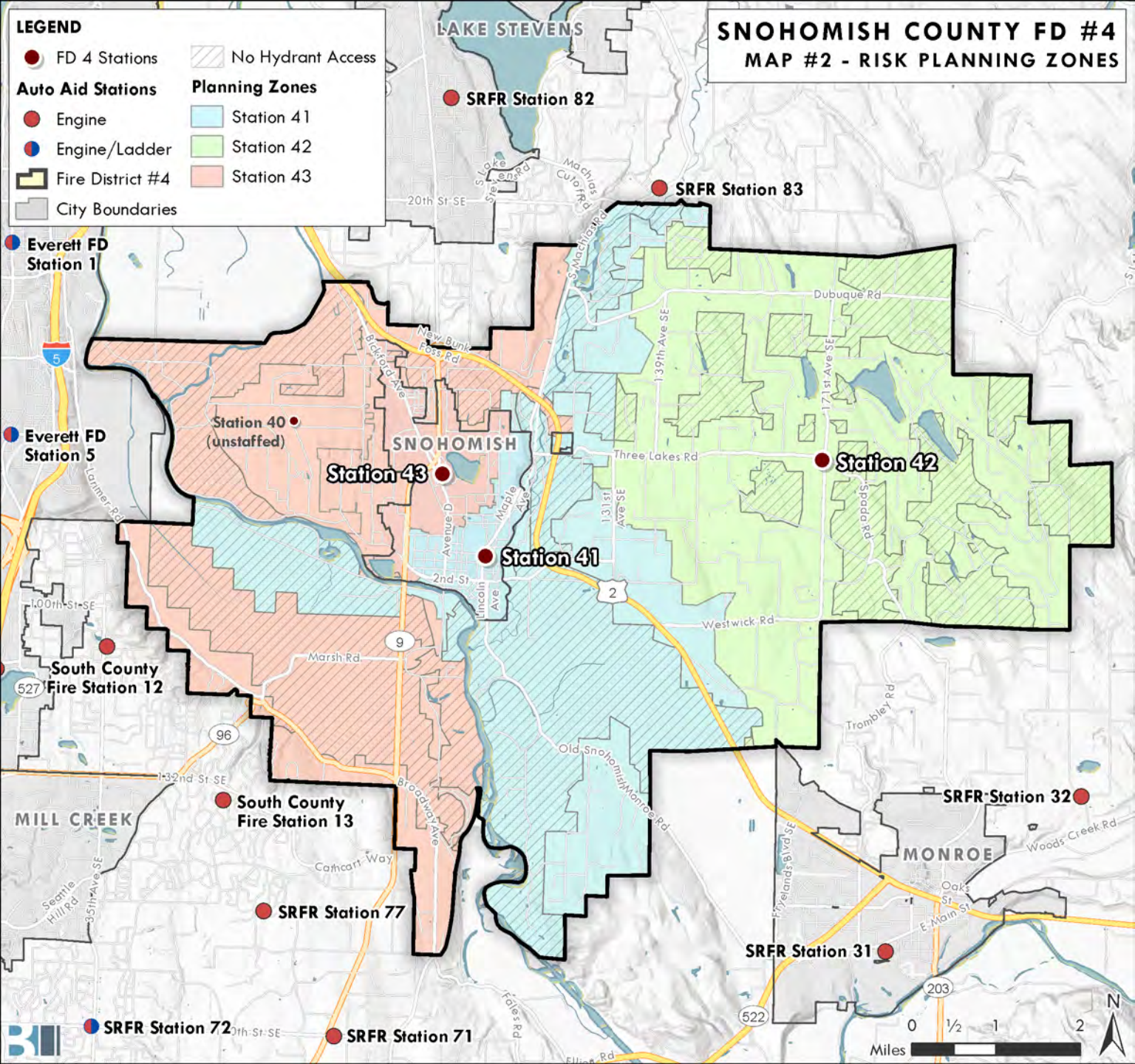
**SNOHOMISH COUNTY FD #4**  
**MAP #1 - GENERAL GEOGRAPHY**



**LEGEND**

- FD 4 Stations
- ▨ No Hydrant Access
- Auto Aid Stations**
- Engine
- Engine/Ladder
- ▭ Fire District #4
- ▭ City Boundaries
- Planning Zones**
- Station 41
- Station 42
- Station 43

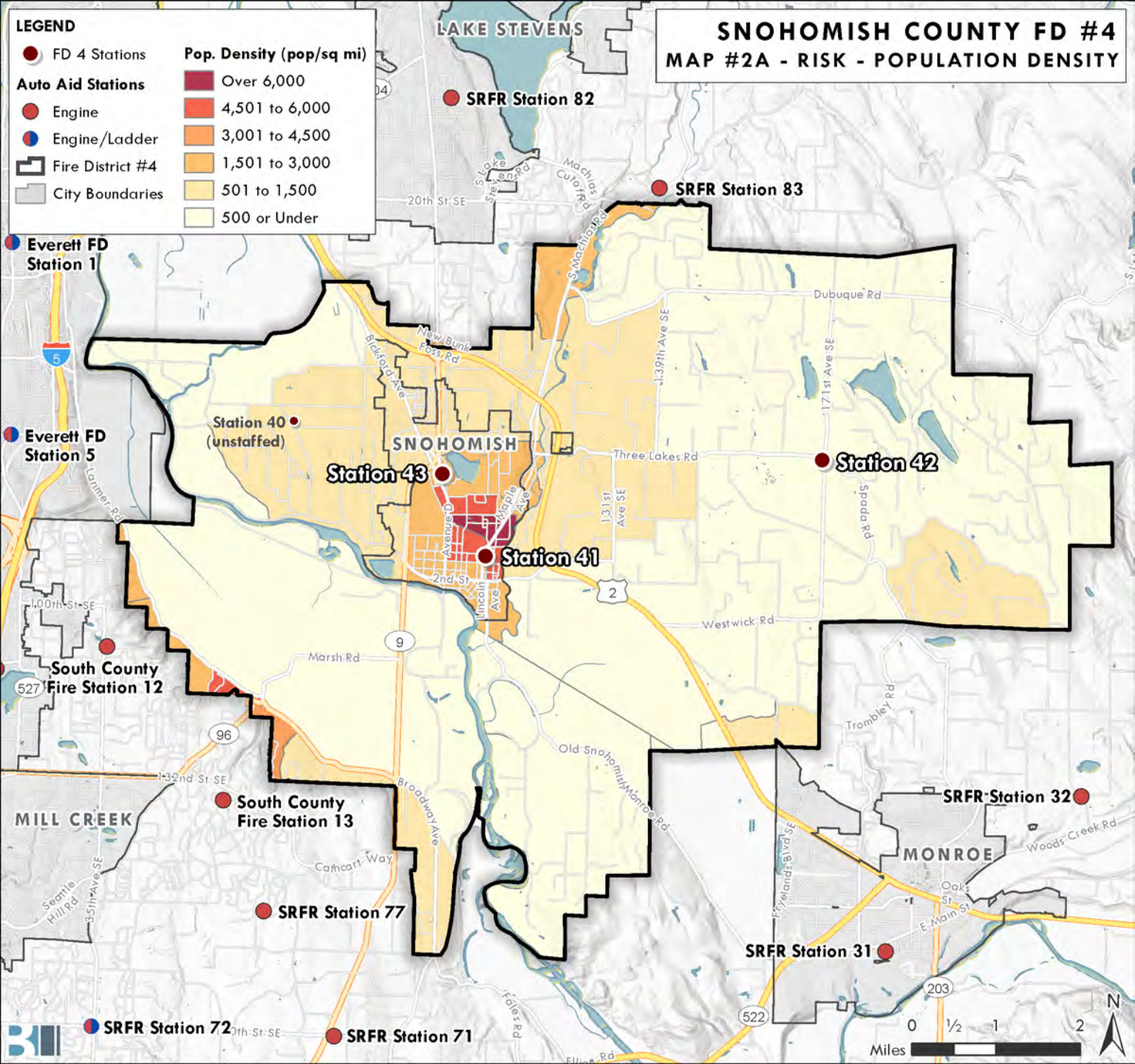
**SNOHOMISH COUNTY FD #4  
MAP #2 - RISK PLANNING ZONES**



**LEGEND**

FD 4 Stations	<b>Pop. Density (pop/sq mi)</b>
Auto Aid Stations	Over 6,000
Engine	4,501 to 6,000
Engine/Ladder	3,001 to 4,500
Fire District #4	1,501 to 3,000
City Boundaries	501 to 1,500
	500 or Under

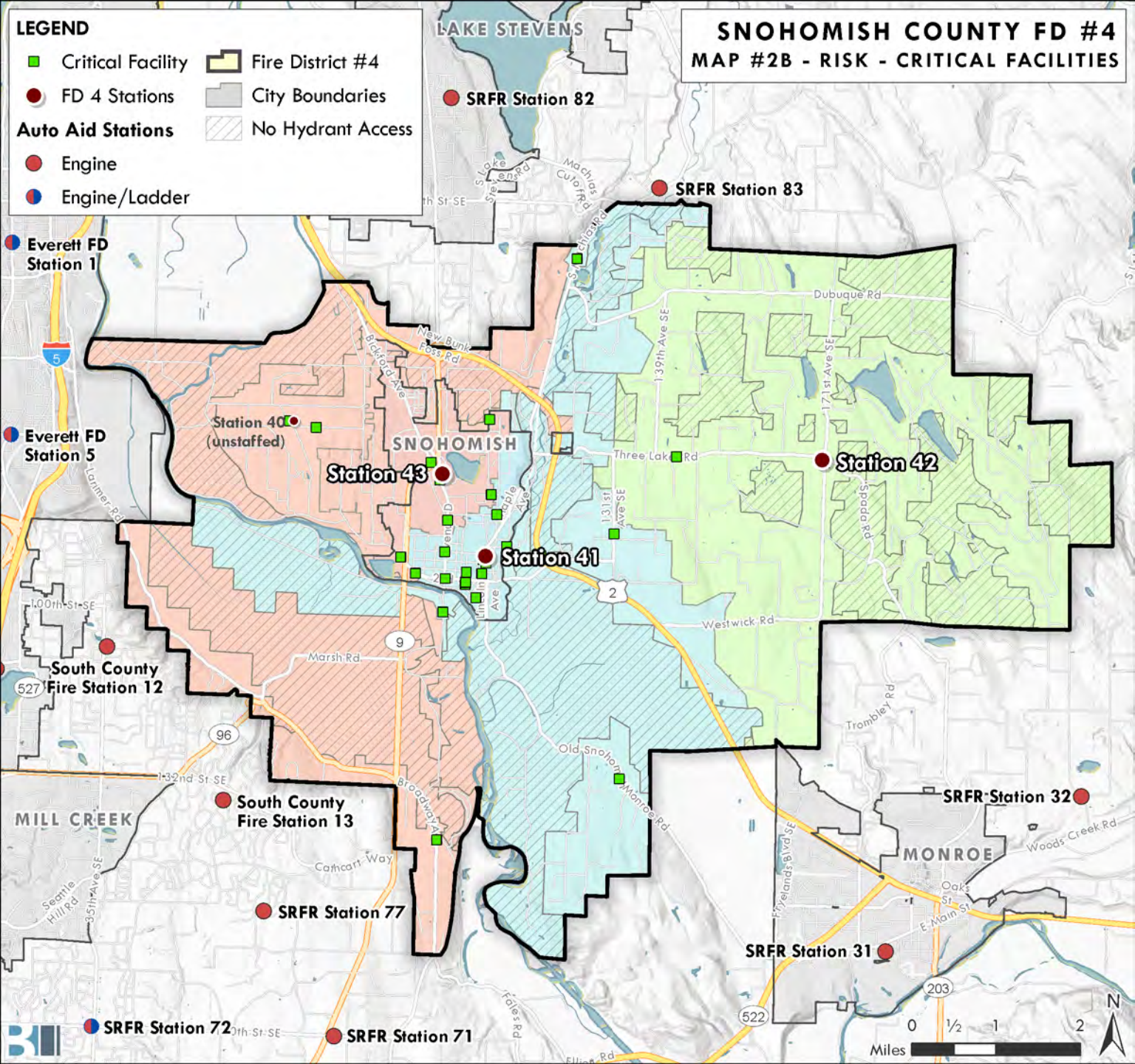
**SNOHOMISH COUNTY FD #4**  
**MAP #2A - RISK - POPULATION DENSITY**



**LEGEND**

- Critical Facility
- FD 4 Stations
- Auto Aid Stations
- Engine
- Engine/Ladder
- Fire District #4
- City Boundaries
- No Hydrant Access

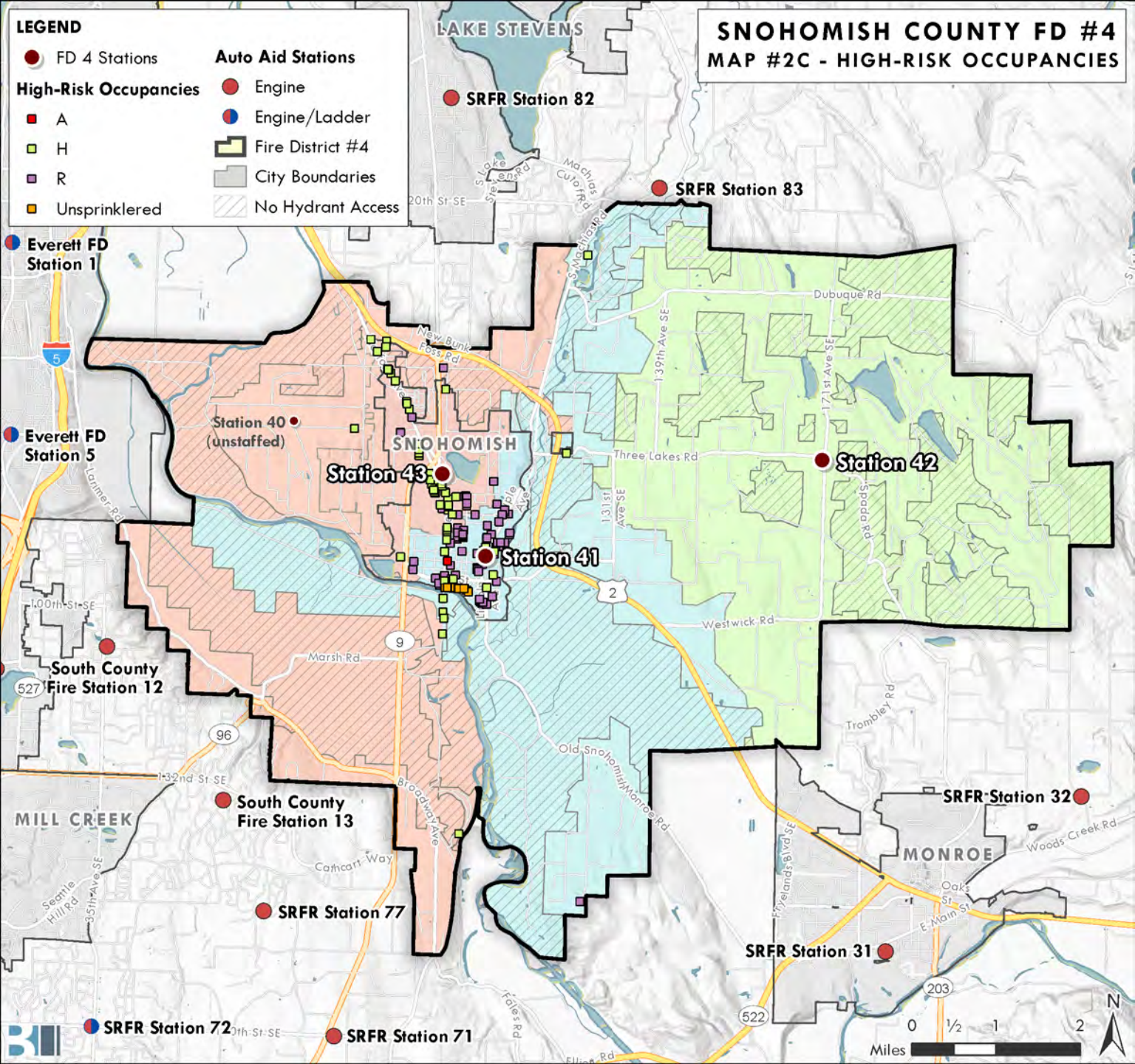
**SNOHOMISH COUNTY FD #4  
MAP #2B - RISK - CRITICAL FACILITIES**



**LEGEND**

- FD 4 Stations
- Auto Aid Stations
- High-Risk Occupancies
- A
- H
- R
- Unsprinklered
- Engine
- Engine/Ladder
- Fire District #4
- City Boundaries
- ▨ No Hydrant Access

**SNOHOMISH COUNTY FD #4  
MAP #2C - HIGH-RISK OCCUPANCIES**



Everett FD Station 1

Everett FD Station 5

South County Fire Station 12

MILL CREEK

SRFR Station 72

Station 40 (unstaffed)

SNOHOMISH

Station 43

Station 41

South County Fire Station 13

SRFR Station 77

SRFR Station 71

LAKE STEVENS

SRFR Station 82

SRFR Station 83

Station 42


SRFR Station 32

MONROE

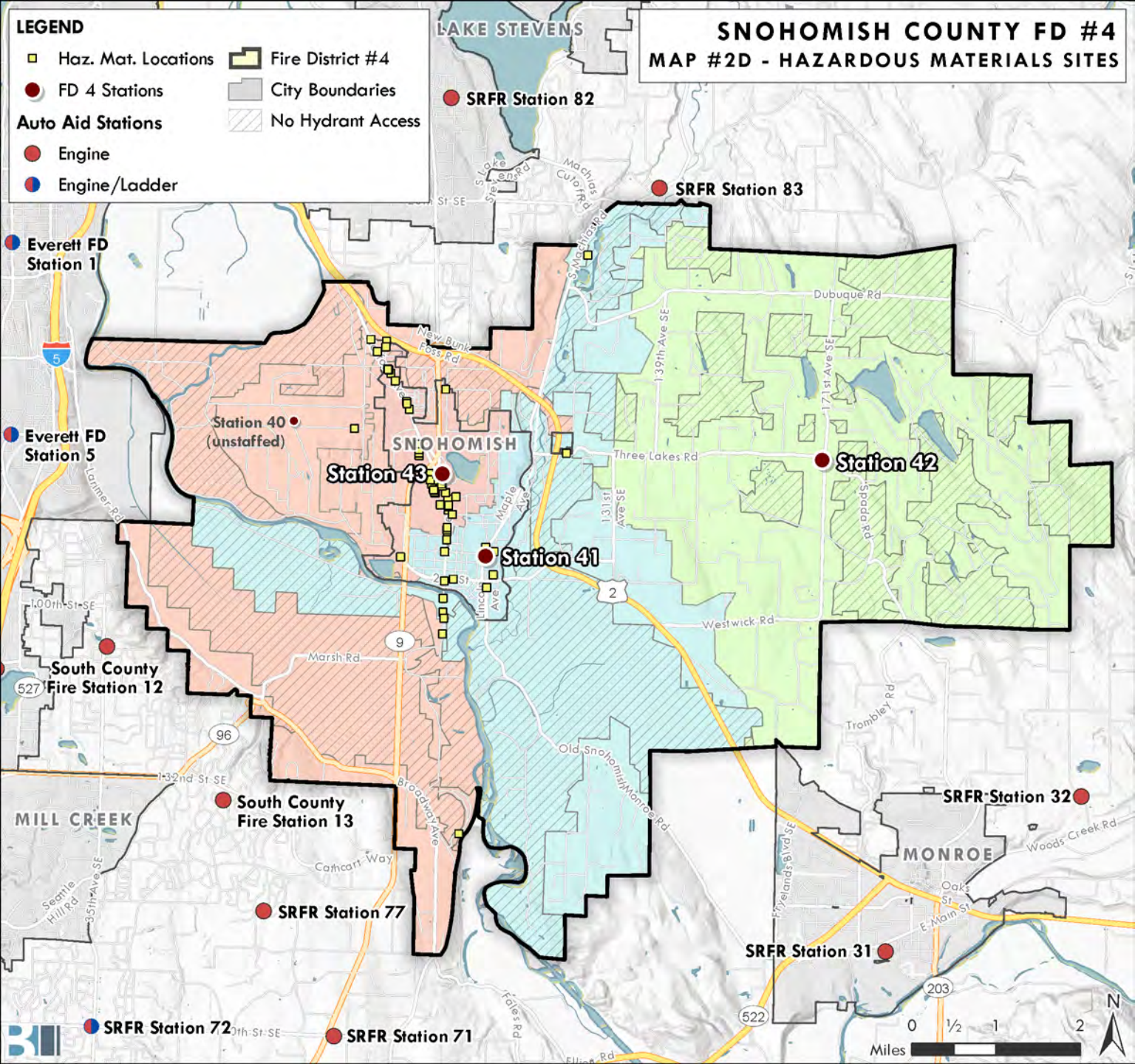
SRFR Station 31

Miles 0 1/2 1 2

**LEGEND**

-  Haz. Mat. Locations
-  Fire District #4
-  FD 4 Stations
-  City Boundaries
- Auto Aid Stations**
-  Engine
-  Engine/Ladder
-  No Hydrant Access

**SNOHOMISH COUNTY FD #4**  
**MAP #2D - HAZARDOUS MATERIALS SITES**



LAKE STEVENS

SRFR Station 82

SRFR Station 83

Everett FD Station 1

Everett FD Station 5

Station 40 (unstaffed)

Station 43

SNOHOMISH

Station 41

Station 42

South County Fire Station 12

South County Fire Station 13

SRFR Station 77

MILL CREEK

SRFR Station 32

MONROE

SRFR Station 31

SRFR Station 72

SRFR Station 71

Miles





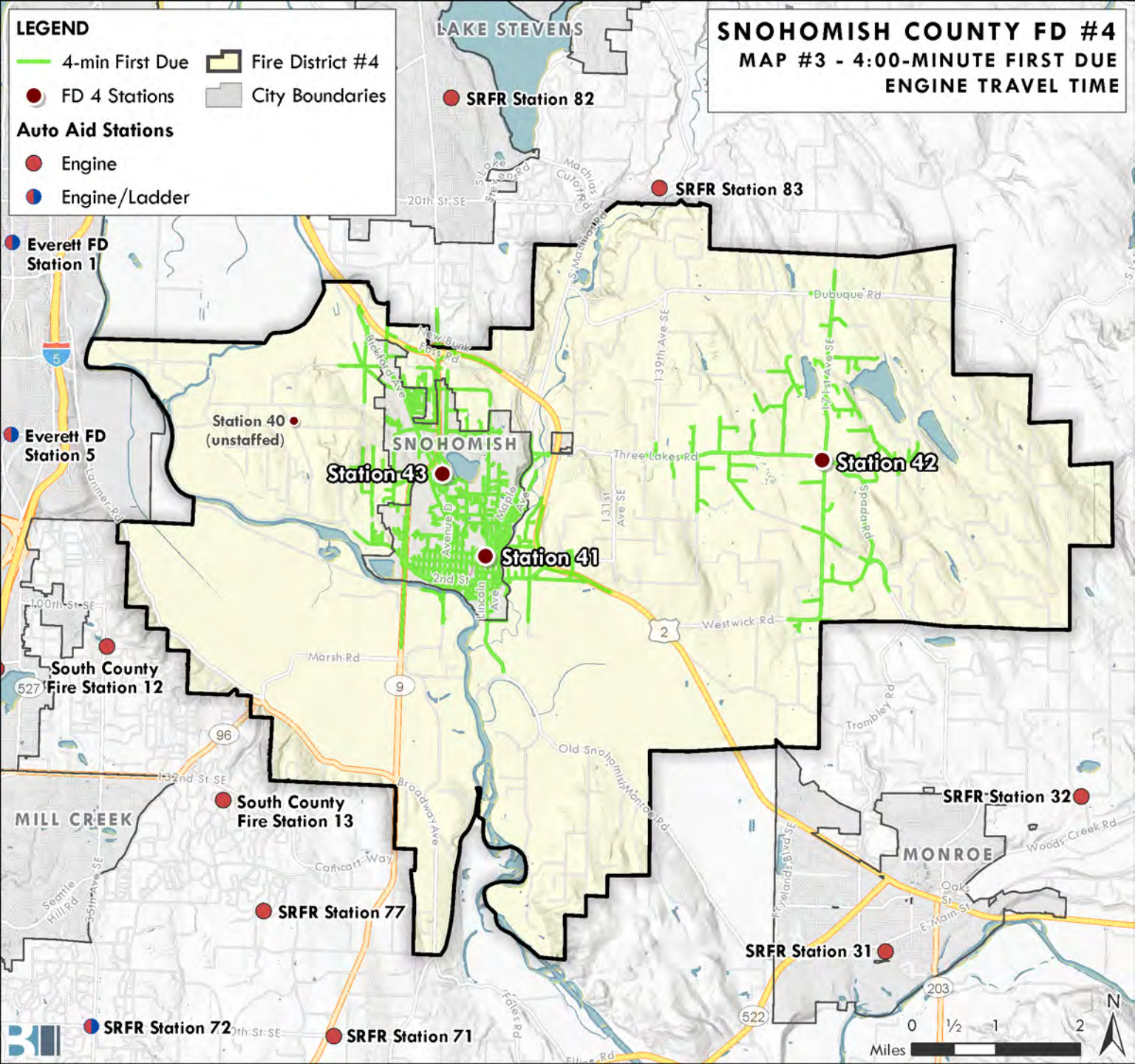
**LEGEND**

- 4-min First Due
- Fire District #4
- FD 4 Stations
- City Boundaries

**Auto Aid Stations**

- Engine
- Engine/Ladder

**SNOHOMISH COUNTY FD #4  
MAP #3 - 4:00-MINUTE FIRST DUE  
ENGINE TRAVEL TIME**



LAKE STEVENS

SRFR Station 82

SRFR Station 83

Everett FD Station 1

Everett FD Station 5

Station 40 (unstaffed)

Station 43

Station 41

Station 42

South County Fire Station 12

South County Fire Station 13

SRFR Station 77

SRFR Station 72

SRFR Station 71

SRFR Station 32

SRFR Station 31

MONROE

Miles 0 1/2 1 2



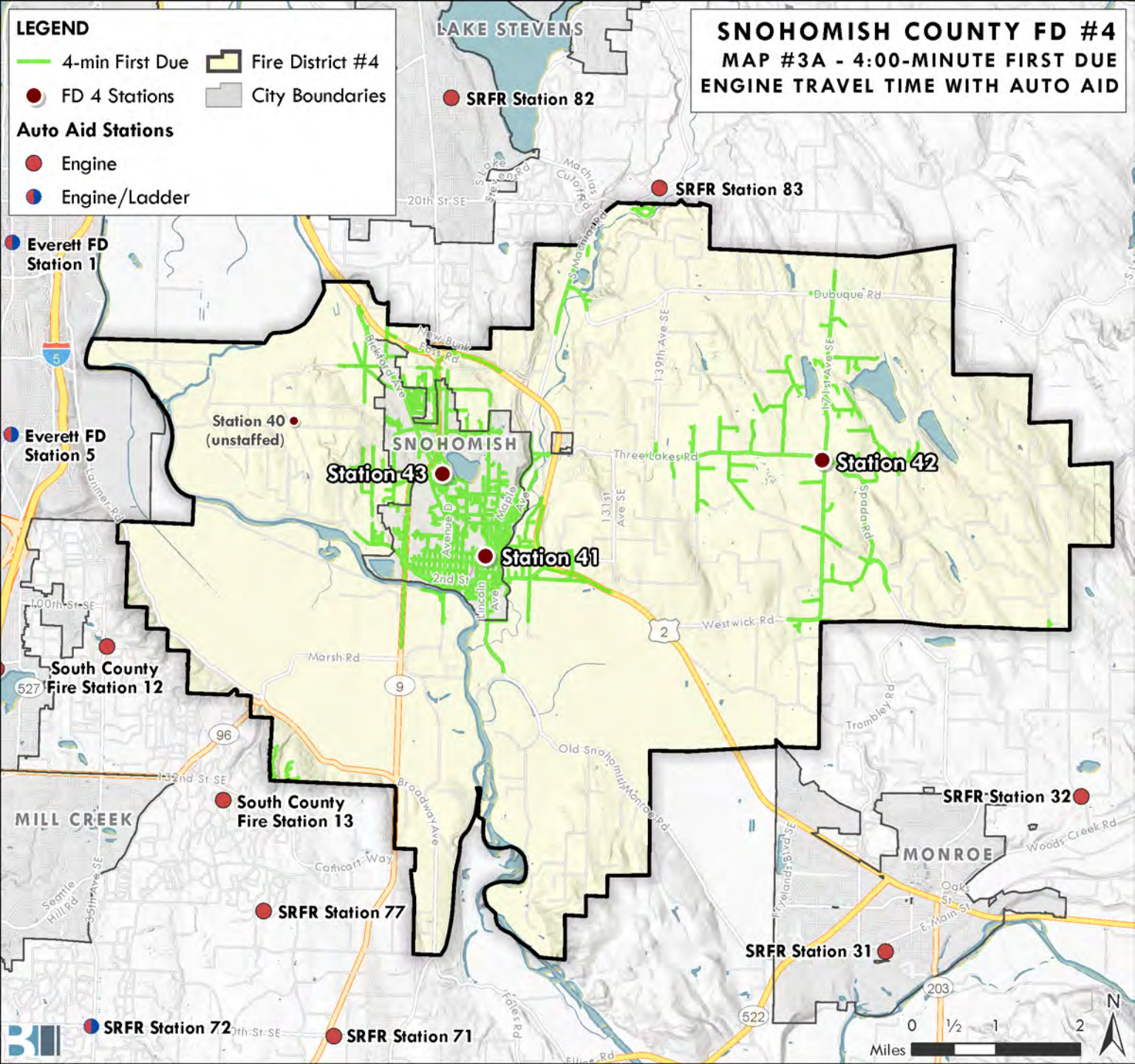
**LEGEND**

- 4-min First Due
- Fire District #4
- FD 4 Stations
- City Boundaries

**Auto Aid Stations**

- Engine
- Engine/Ladder

**SNOHOMISH COUNTY FD #4**  
**MAP #3A - 4:00-MINUTE FIRST DUE**  
**ENGINE TRAVEL TIME WITH AUTO AID**



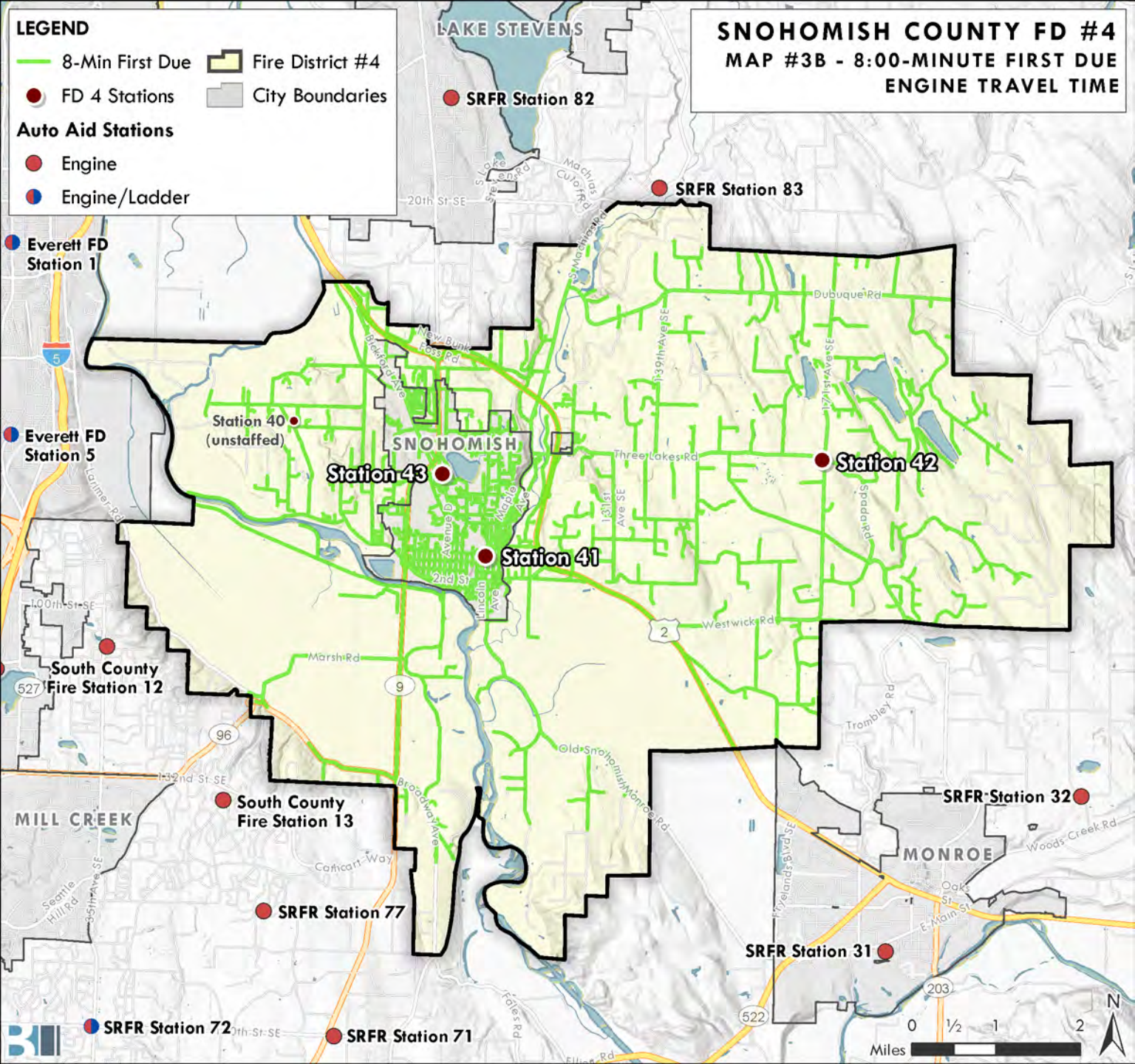
**LEGEND**

- 8-Min First Due
- Fire District #4
- FD 4 Stations
- City Boundaries

**Auto Aid Stations**

- Engine
- Engine/Ladder

**SNOHOMISH COUNTY FD #4**  
**MAP #3B - 8:00-MINUTE FIRST DUE**  
**ENGINE TRAVEL TIME**



Everett FD Station 1

Everett FD Station 5

South County Fire Station 12

MILL CREEK

SRFR Station 72

Station 40 (unstaffed)

Station 43

SNOHOMISH

Station 41

South County Fire Station 13

SRFR Station 77

SRFR Station 71

LAKE STEVENS

SRFR Station 82

SRFR Station 83

Station 42

MONROE

SRFR Station 32

SRFR Station 31

Miles



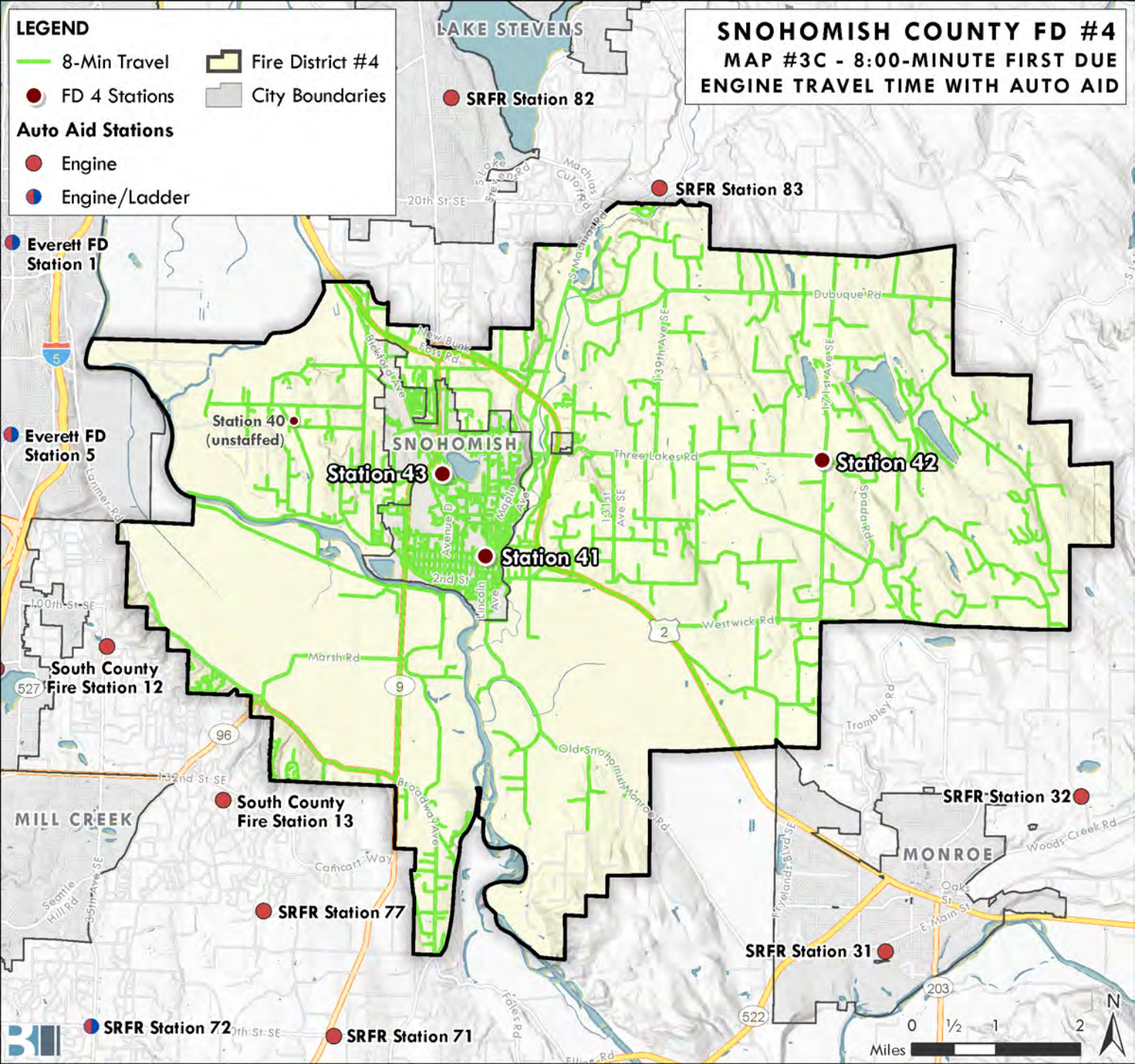
**LEGEND**

- 8-Min Travel
- FD 4 Stations
- Fire District #4
- City Boundaries

**Auto Aid Stations**

- Engine
- Engine/Ladder

**SNOHOMISH COUNTY FD #4**  
**MAP #3C - 8:00-MINUTE FIRST DUE**  
**ENGINE TRAVEL TIME WITH AUTO AID**



Everett FD Station 1

Everett FD Station 5

South County Fire Station 12

MILL CREEK

SRFR Station 72

Station 40 (unstaffed)

Station 43

SNOHOMISH

Station 41

South County Fire Station 13

SRFR Station 77

SRFR Station 71

LAKE STEVENS

SRFR Station 82

SRFR Station 83

Station 42

SRFR Station 32

MONROE

SRFR Station 31



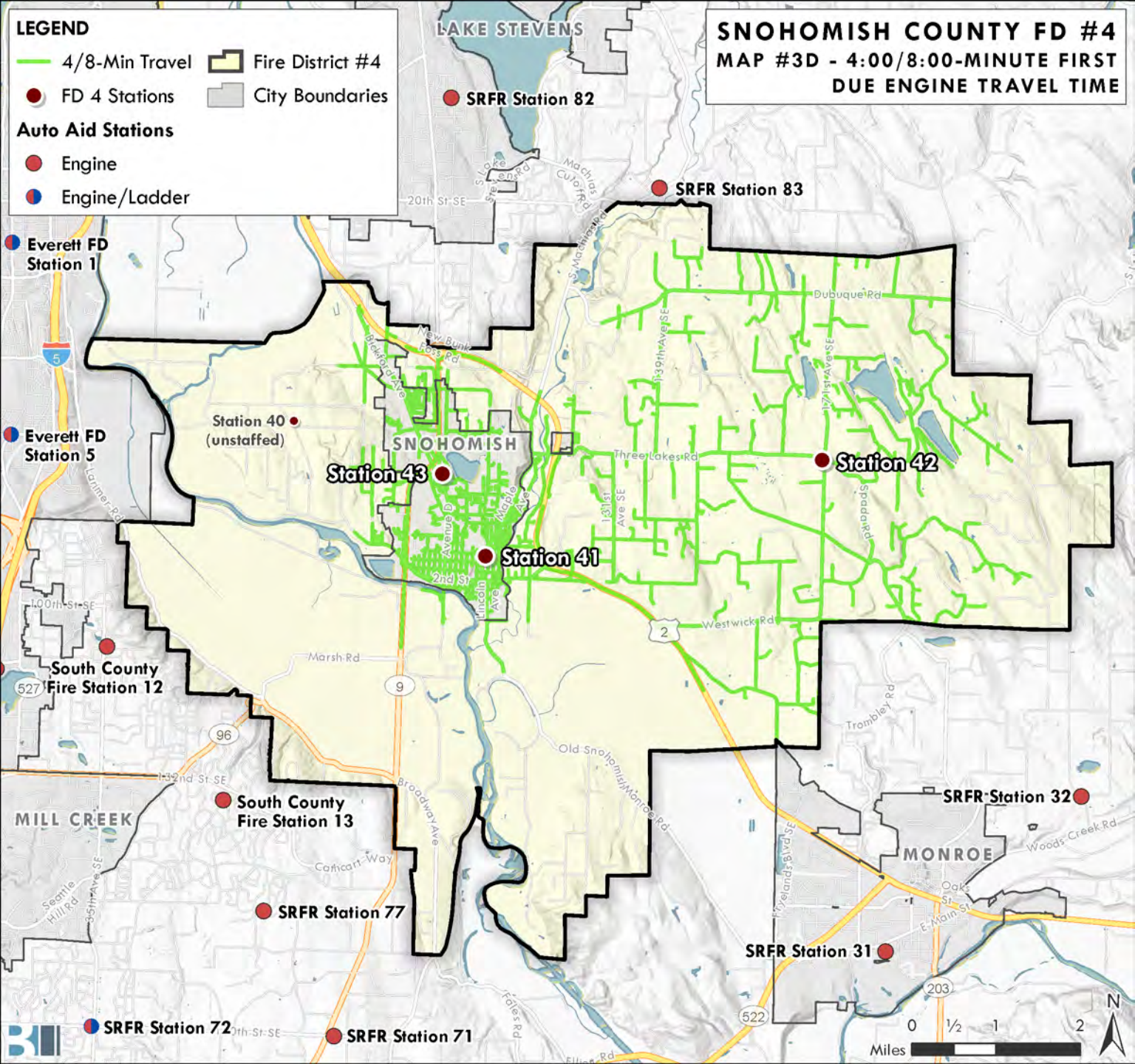
**LEGEND**

- 4/8-Min Travel
- Fire District #4
- FD 4 Stations
- City Boundaries

**Auto Aid Stations**

- Engine
- Engine/Ladder

**SNOHOMISH COUNTY FD #4**  
**MAP #3D - 4:00/8:00-MINUTE FIRST**  
**DUE ENGINE TRAVEL TIME**



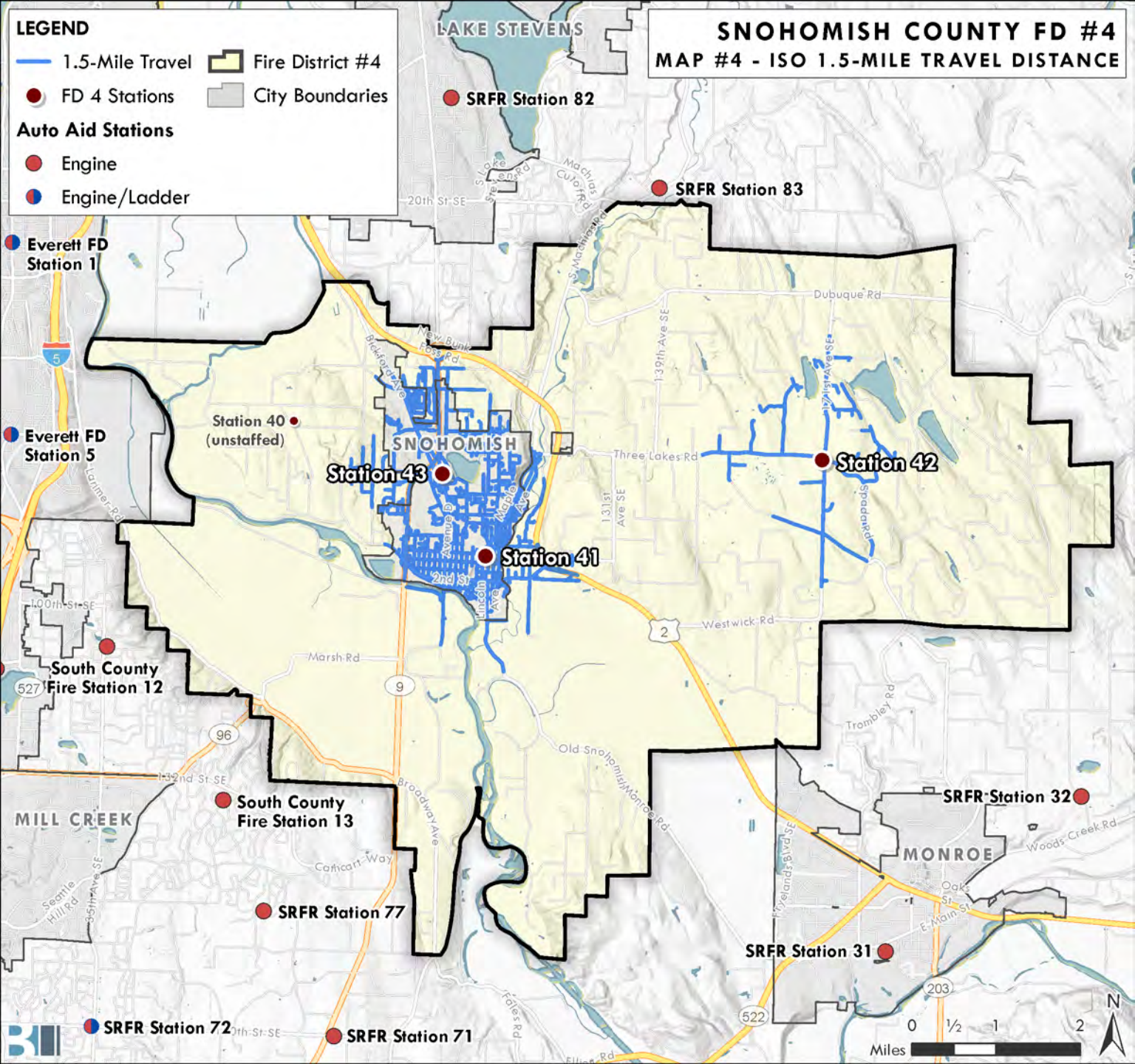
**LEGEND**

- 1.5-Mile Travel
- Fire District #4
- FD 4 Stations
- City Boundaries

**Auto Aid Stations**

- Engine
- Engine/Ladder

**SNOHOMISH COUNTY FD #4**  
**MAP #4 - ISO 1.5-MILE TRAVEL DISTANCE**



**LEGEND**

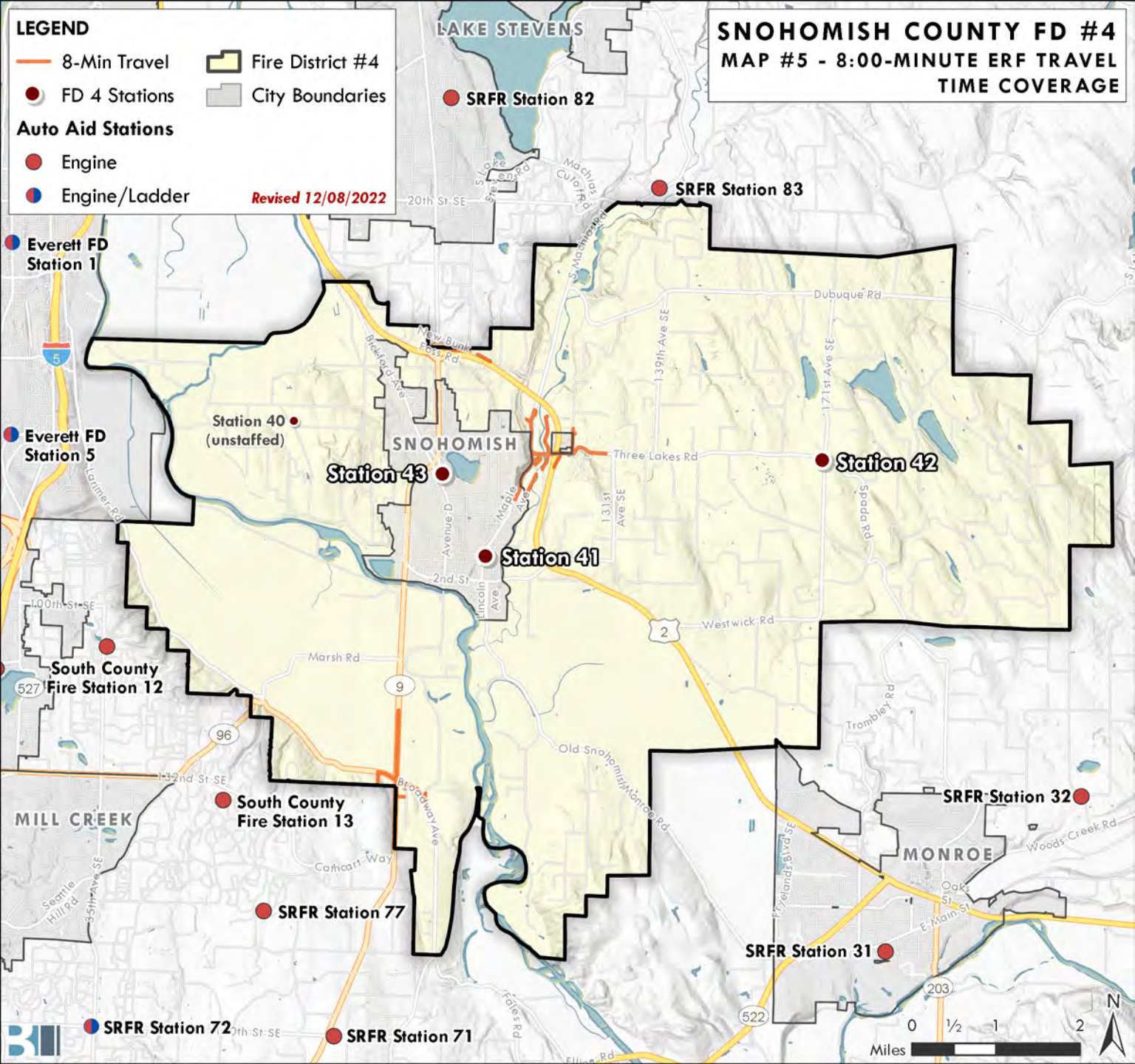
- 8-Min Travel
- FD 4 Stations
- Fire District #4
- City Boundaries

**Auto Aid Stations**

- Engine
- Engine/Ladder

Revised 12/08/2022

**SNOHOMISH COUNTY FD #4**  
**MAP #5 - 8:00-MINUTE ERF TRAVEL**  
**TIME COVERAGE**



**LEGEND**

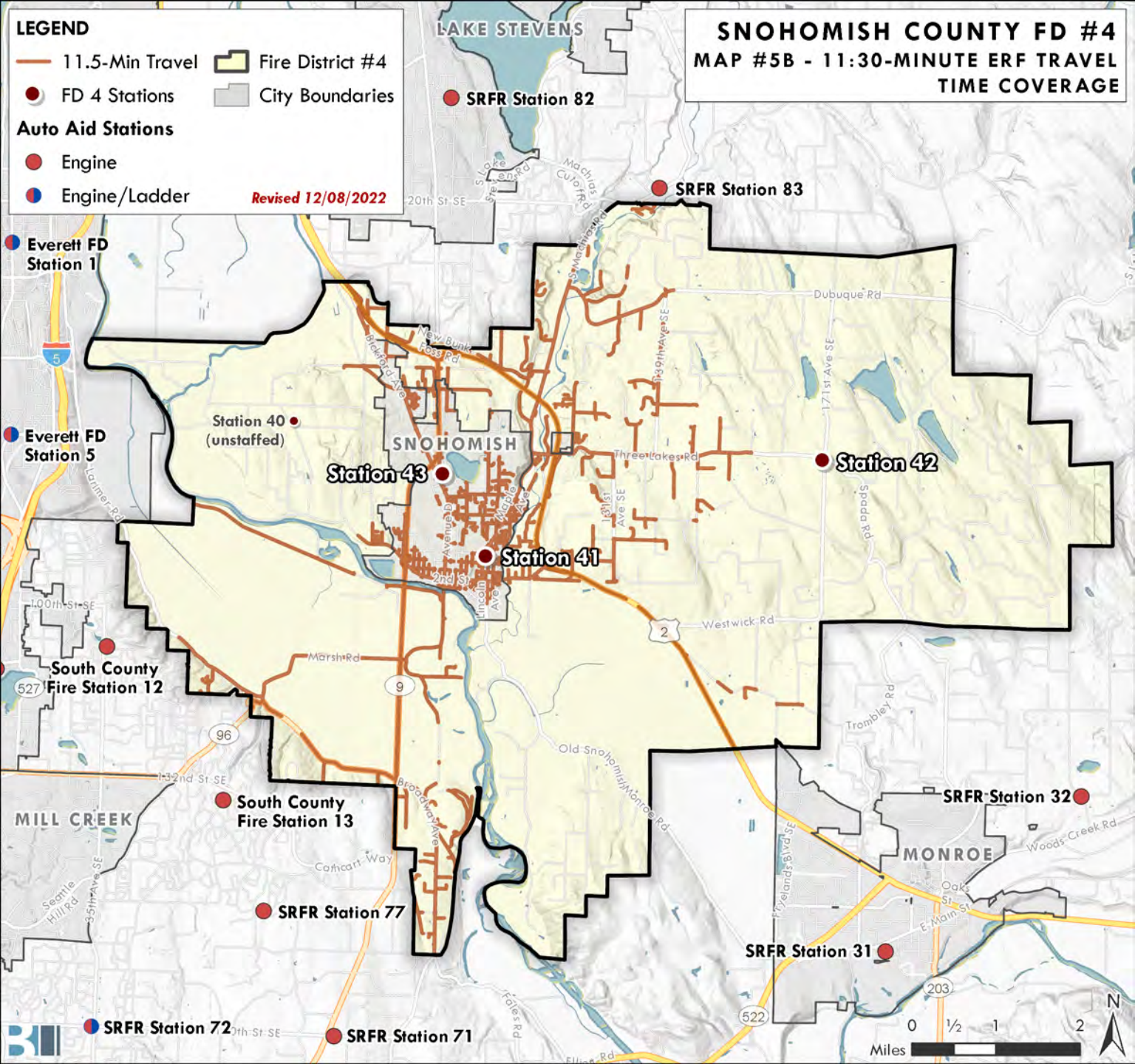
- 11.5-Min Travel
- Fire District #4
- FD 4 Stations
- City Boundaries

**Auto Aid Stations**

- Engine
- Engine/Ladder

Revised 12/08/2022

**SNOHOMISH COUNTY FD #4**  
**MAP #5B - 11:30-MINUTE ERF TRAVEL**  
**TIME COVERAGE**



Everett FD Station 1

Everett FD Station 5

South County Fire Station 12

MILL CREEK

SRFR Station 72

Station 40 (unstaffed)

Station 43

Station 41

South County Fire Station 13

SRFR Station 77

SRFR Station 71

SRFR Station 82

SRFR Station 83

Station 42

SRFR Station 32

SRFR Station 31

MONROE

Miles





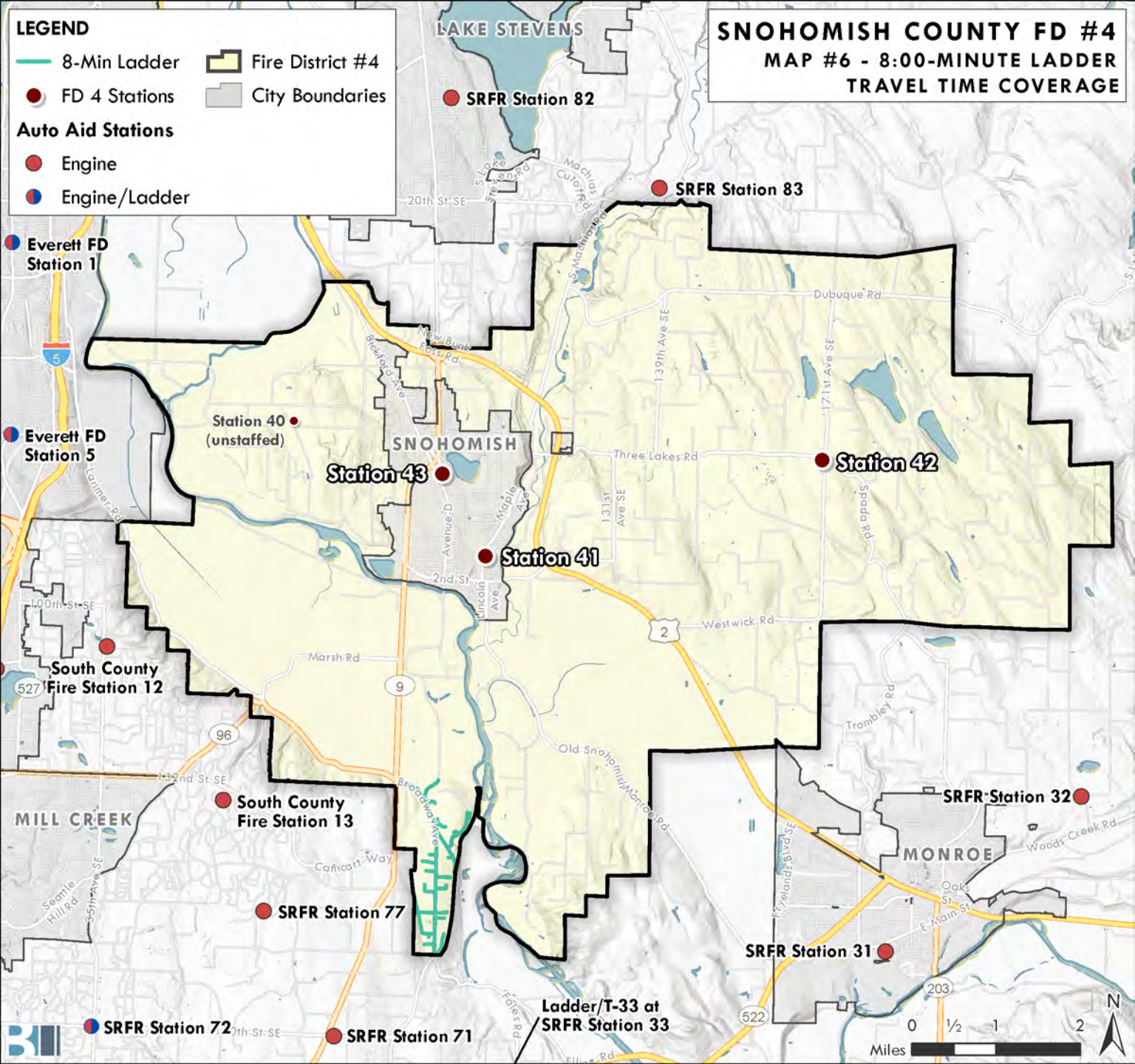
**LEGEND**

- 8-Min Ladder
- FD 4 Stations
- Fire District #4
- City Boundaries

**Auto Aid Stations**

- Engine
- Engine/Ladder

**SNOHOMISH COUNTY FD #4**  
**MAP #6 - 8:00-MINUTE LADDER**  
**TRAVEL TIME COVERAGE**



LAKE STEVENS

SRFR Station 82

SRFR Station 83

Everett FD Station 1

Everett FD Station 5

Station 40 (unstaffed)

Station 43

Station 41

Station 42

South County Fire Station 12

MILL CREEK

South County Fire Station 13

SRFR Station 77

SRFR Station 32

MONROE

SRFR Station 31

SRFR Station 72

SRFR Station 71

Ladder/T-33 at SRFR Station 33



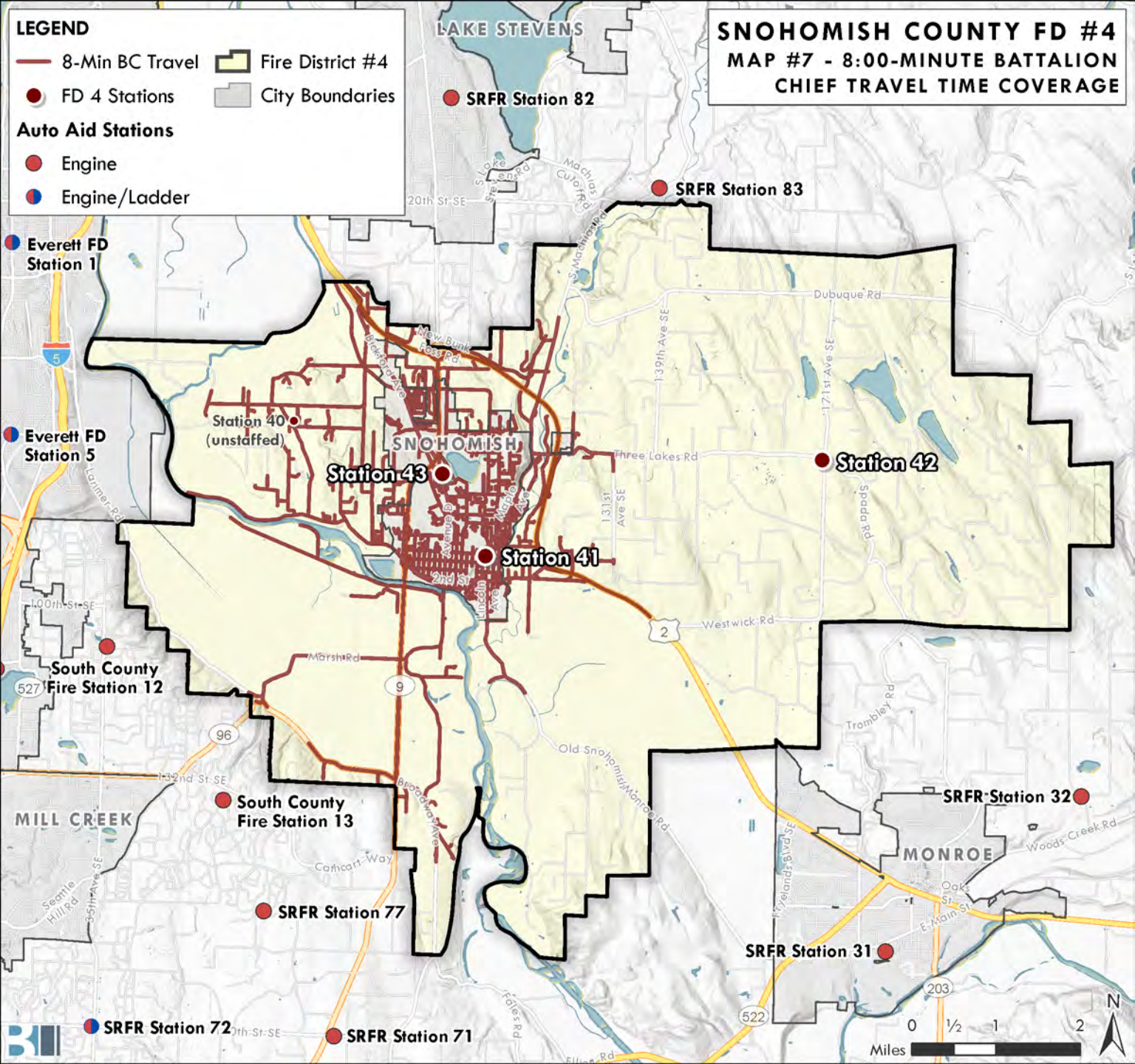
**LEGEND**

- 8-Min BC Travel
- Fire District #4
- FD 4 Stations
- City Boundaries

**Auto Aid Stations**

- Engine
- Engine/Ladder

**SNOHOMISH COUNTY FD #4**  
**MAP #7 - 8:00-MINUTE BATTALION**  
**CHIEF TRAVEL TIME COVERAGE**



Everett FD Station 1

Everett FD Station 5

South County Fire Station 12

MILL CREEK

SRFR Station 72

LAKE STEVENS

SRFR Station 82

SRFR Station 83

Station 40 (unstaffed)

Station 43

SNOHOMISH

Station 41

Station 42

South County Fire Station 13

SRFR Station 77

SRFR Station 71

MONROE

SRFR Station 32

SRFR Station 31

Miles



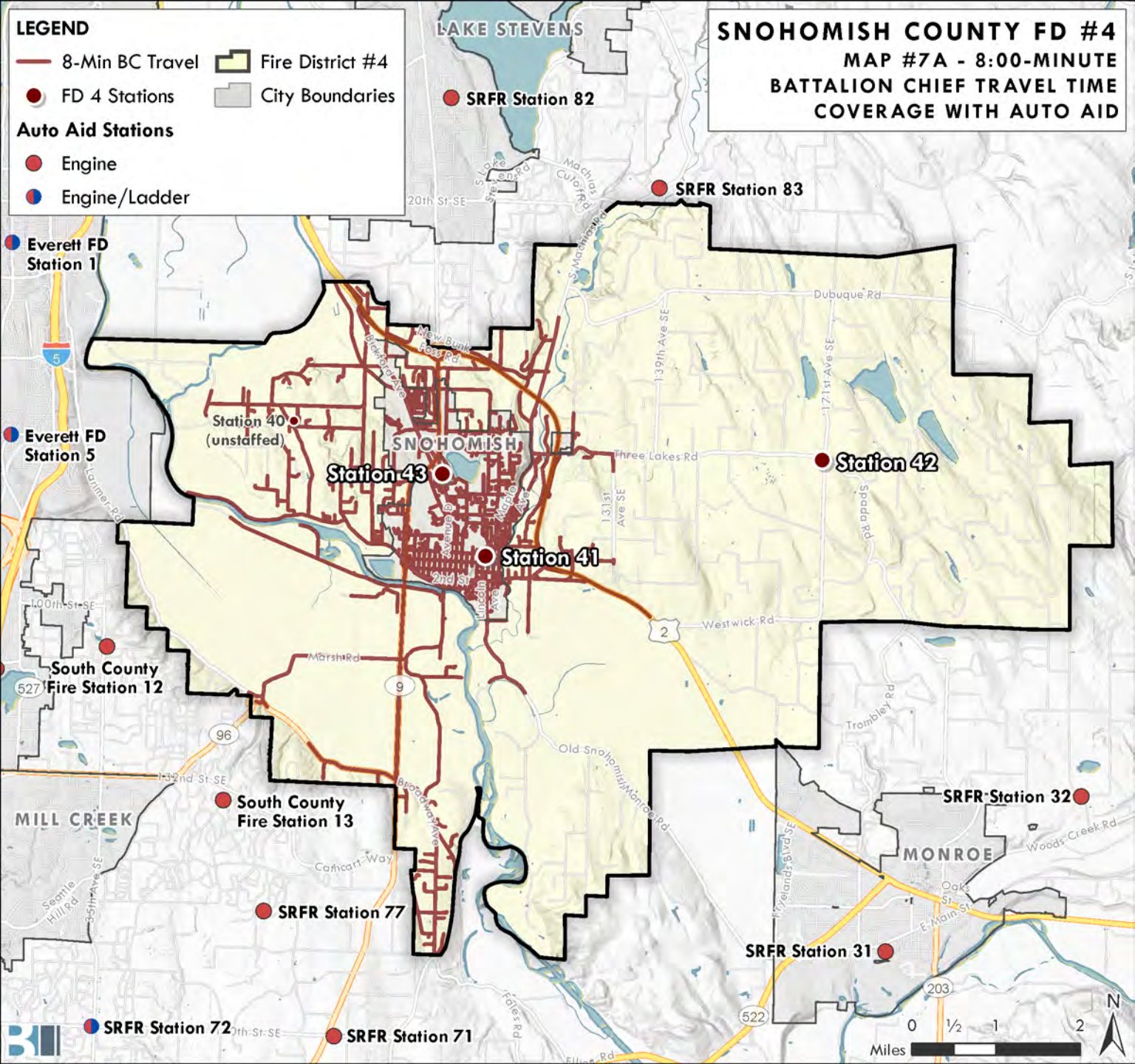
**LEGEND**

- 8-Min BC Travel
- Fire District #4
- FD 4 Stations
- City Boundaries

**Auto Aid Stations**

- Engine
- Engine/Ladder

**SNOHOMISH COUNTY FD #4**  
**MAP #7A - 8:00-MINUTE**  
**BATTALION CHIEF TRAVEL TIME**  
**COVERAGE WITH AUTO AID**



Everett FD Station 1

Everett FD Station 5

South County Fire Station 12

MILL CREEK

SRFR Station 72

Station 40 (unstaffed)

Station 43

Station 41

South County Fire Station 13

SRFR Station 77

SRFR Station 71

LAKE STEVENS

SRFR Station 82

SRFR Station 83

Station 42

MONROE

SRFR Station 32

SRFR Station 31



**LEGEND**

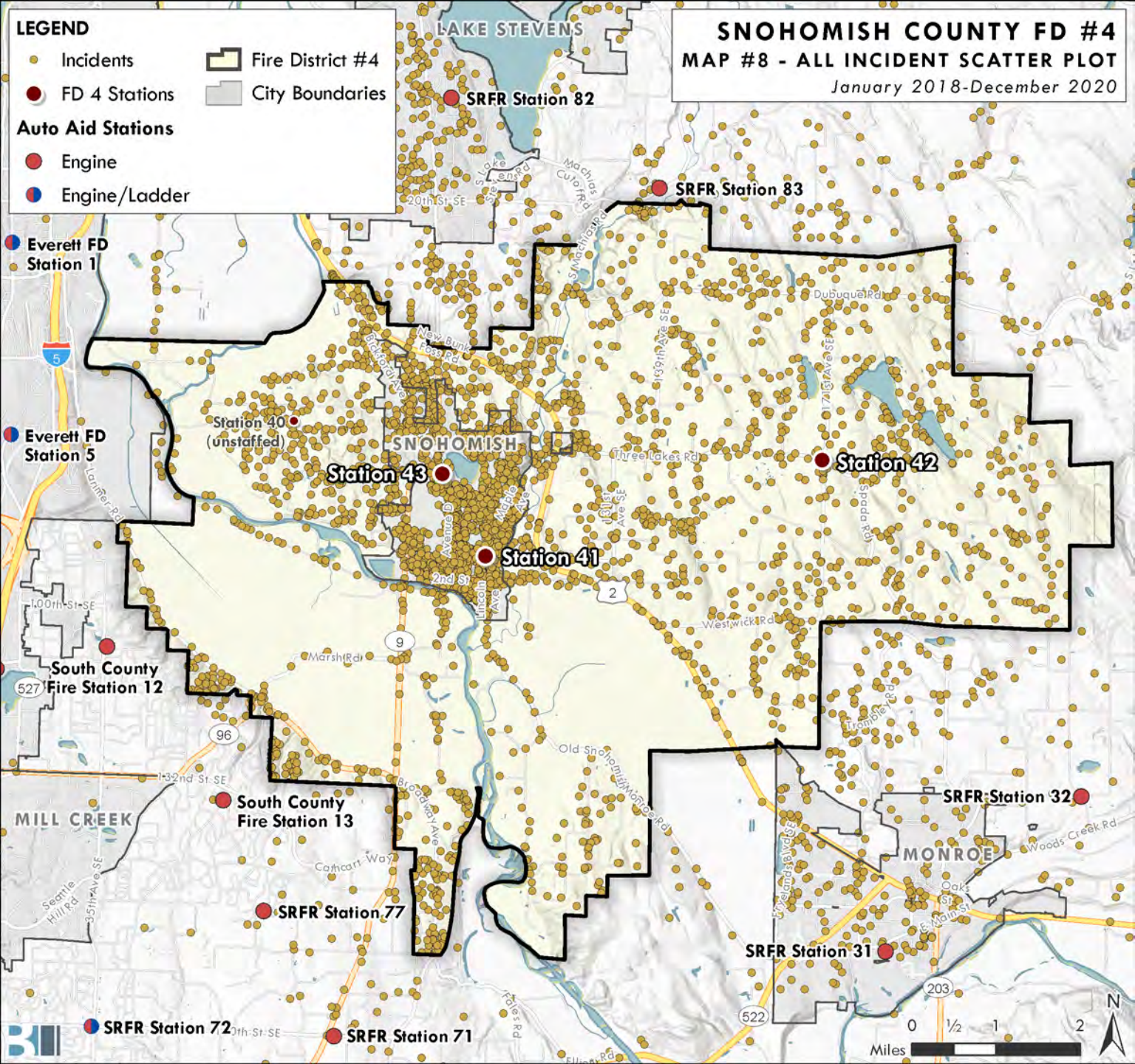
- Incidents
- FD 4 Stations
- Fire District #4
- City Boundaries

**Auto Aid Stations**

- Engine
- Engine/Ladder

**SNOHOMISH COUNTY FD #4**  
**MAP #8 - ALL INCIDENT SCATTER PLOT**

January 2018-December 2020



**LEGEND**

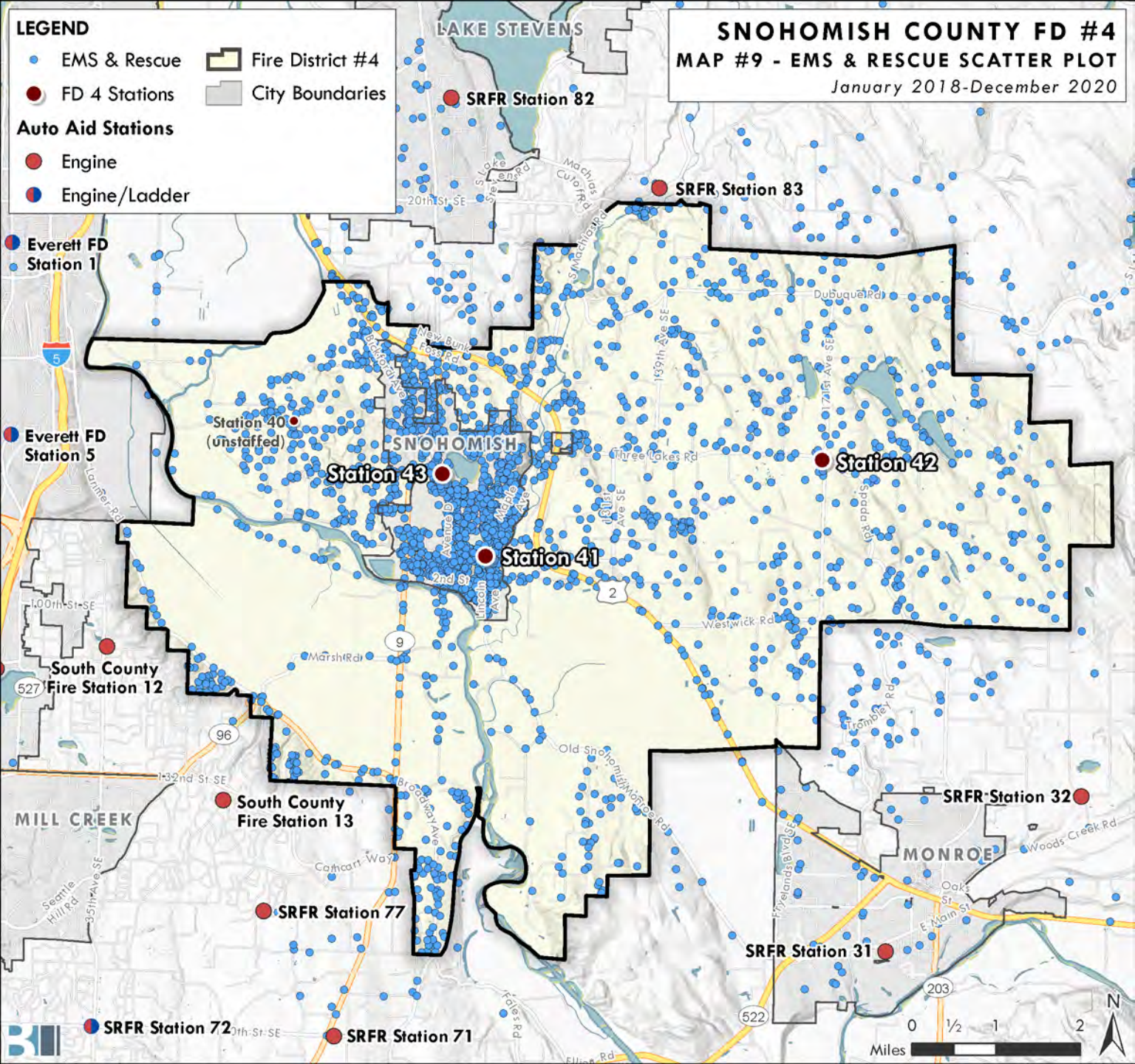
- EMS & Rescue
- Fire District #4
- FD 4 Stations
- City Boundaries

**Auto Aid Stations**

- Engine
- Engine/Ladder

**SNOHOMISH COUNTY FD #4  
MAP #9 - EMS & RESCUE SCATTER PLOT**

January 2018-December 2020



Everett FD Station 1

Everett FD Station 5

South County Fire Station 12

MILL CREEK

SRFR Station 72

SRFR Station 82

SRFR Station 83

Station 40 (unstaffed)

Station 43

Station 41

Station 42

South County Fire Station 13

SRFR Station 77

SRFR Station 71

SRFR Station 32

SRFR Station 31

MONROE

Miles 0 1/2 1 2

**LEGEND**

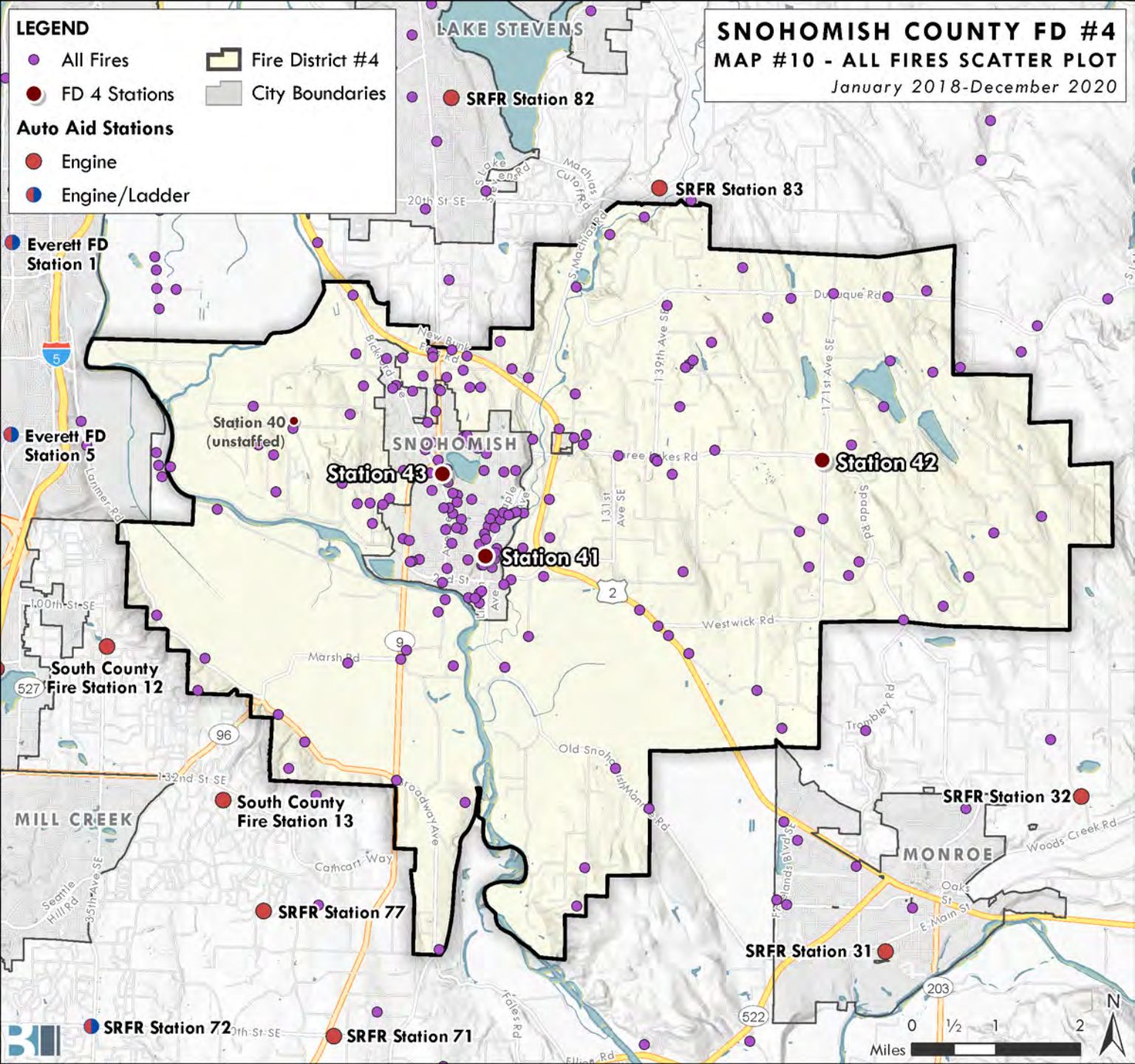
- All Fires
- FD 4 Stations
-  Fire District #4
-  City Boundaries

**Auto Aid Stations**

- Engine
- Engine/Ladder

**SNOHOMISH COUNTY FD #4  
MAP #10 - ALL FIRES SCATTER PLOT**

January 2018-December 2020



Everett FD Station 1

Everett FD Station 5

South County Fire Station 12

MILL CREEK

SRFR Station 72

Station 40 (unstaffed)

Station 43

Station 41

South County Fire Station 13

SRFR Station 77

SRFR Station 71

LAKE STEVENS

SRFR Station 82

SRFR Station 83

Station 42

SRFR Station 32

MONROE

SRFR Station 31

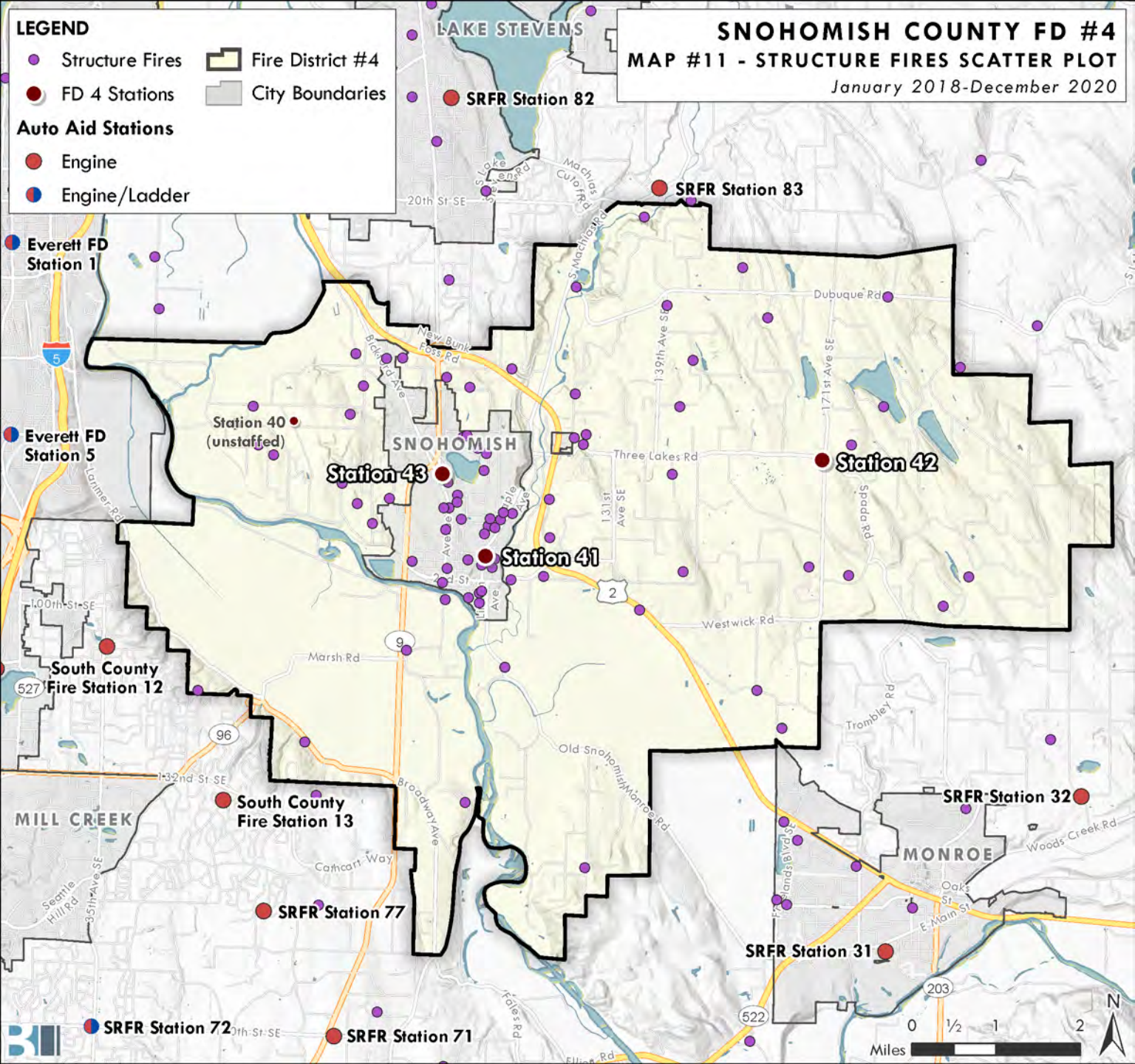
Miles 0 1/2 1 2

**LEGEND**

- Structure Fires
- FD 4 Stations
- Auto Aid Stations
- Engine
- Engine/Ladder
- Fire District #4
- City Boundaries

**SNOHOMISH COUNTY FD #4**  
**MAP #11 - STRUCTURE FIRES SCATTER PLOT**

January 2018-December 2020

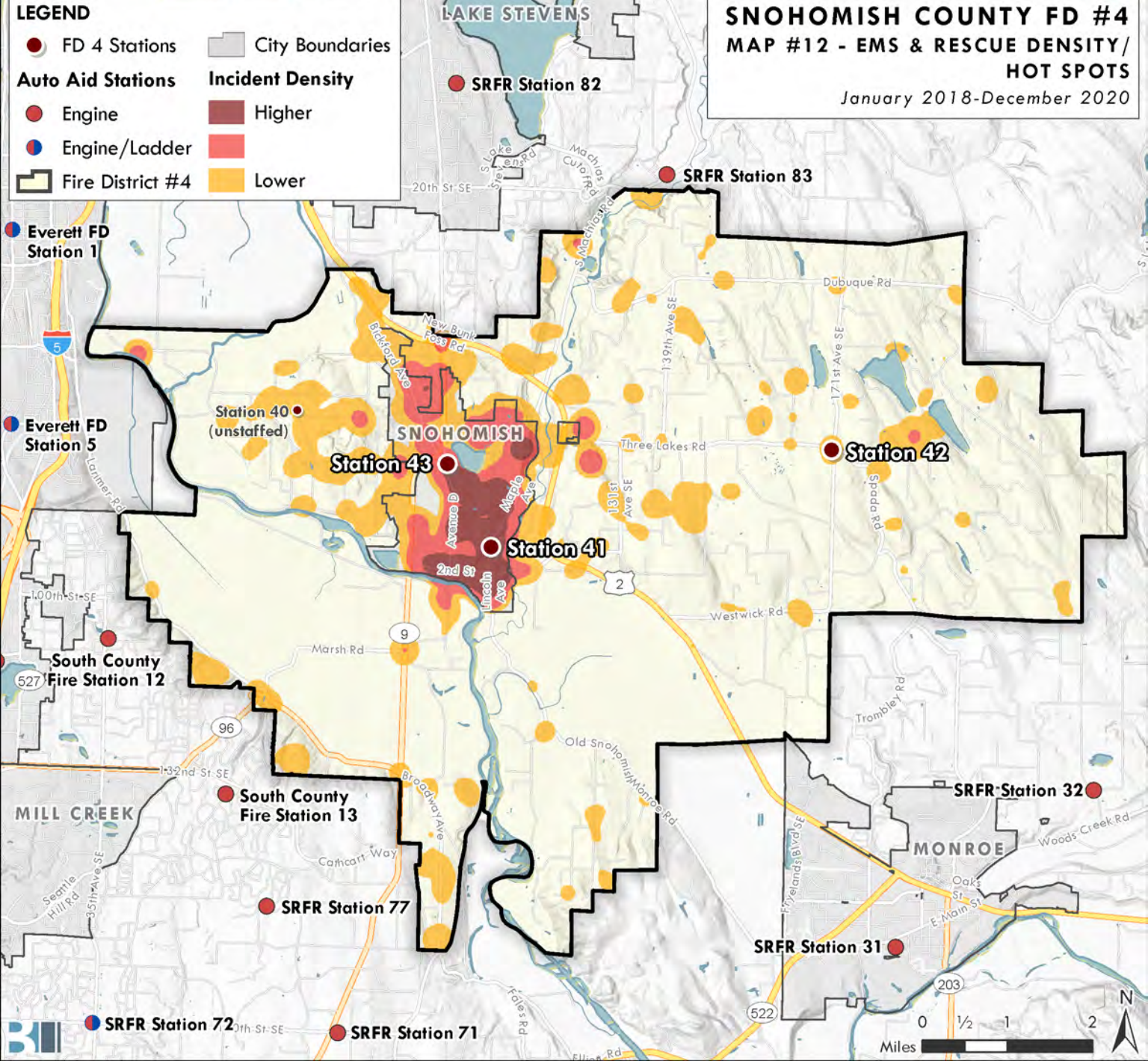


**LEGEND**

- FD 4 Stations
- City Boundaries
- Auto Aid Stations
- Incident Density
- Engine
- Higher
- Engine/Ladder
- Lower
- Fire District #4

**SNOHOMISH COUNTY FD #4**  
**MAP #12 - EMS & RESCUE DENSITY /**  
**HOT SPOTS**

January 2018-December 2020

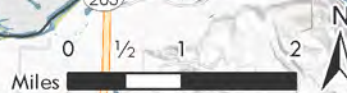
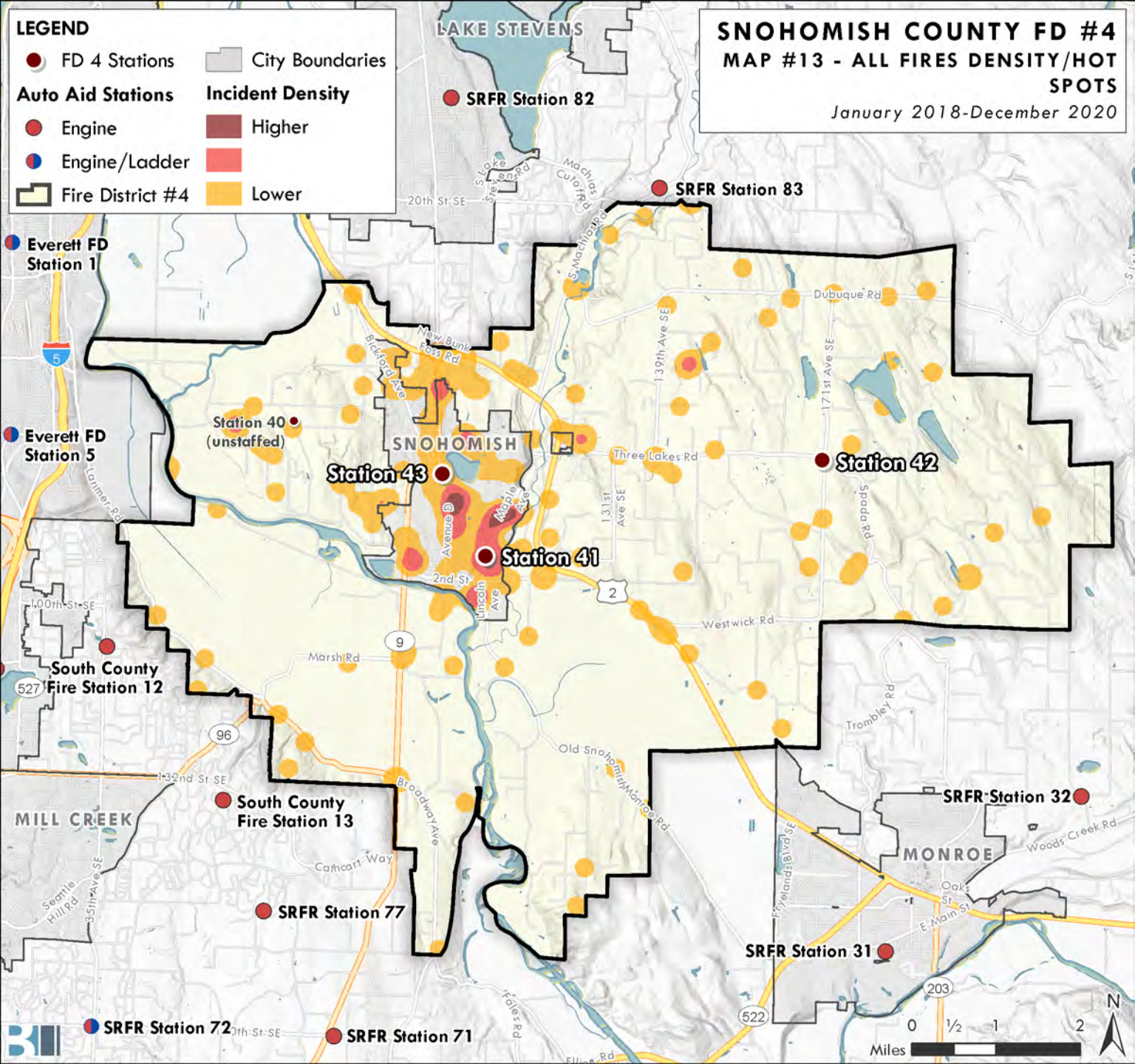




**LEGEND**

- FD 4 Stations
- City Boundaries
- Auto Aid Stations
- Incident Density
- Engine
- Higher
- Engine/Ladder
- Lower
- Fire District #4

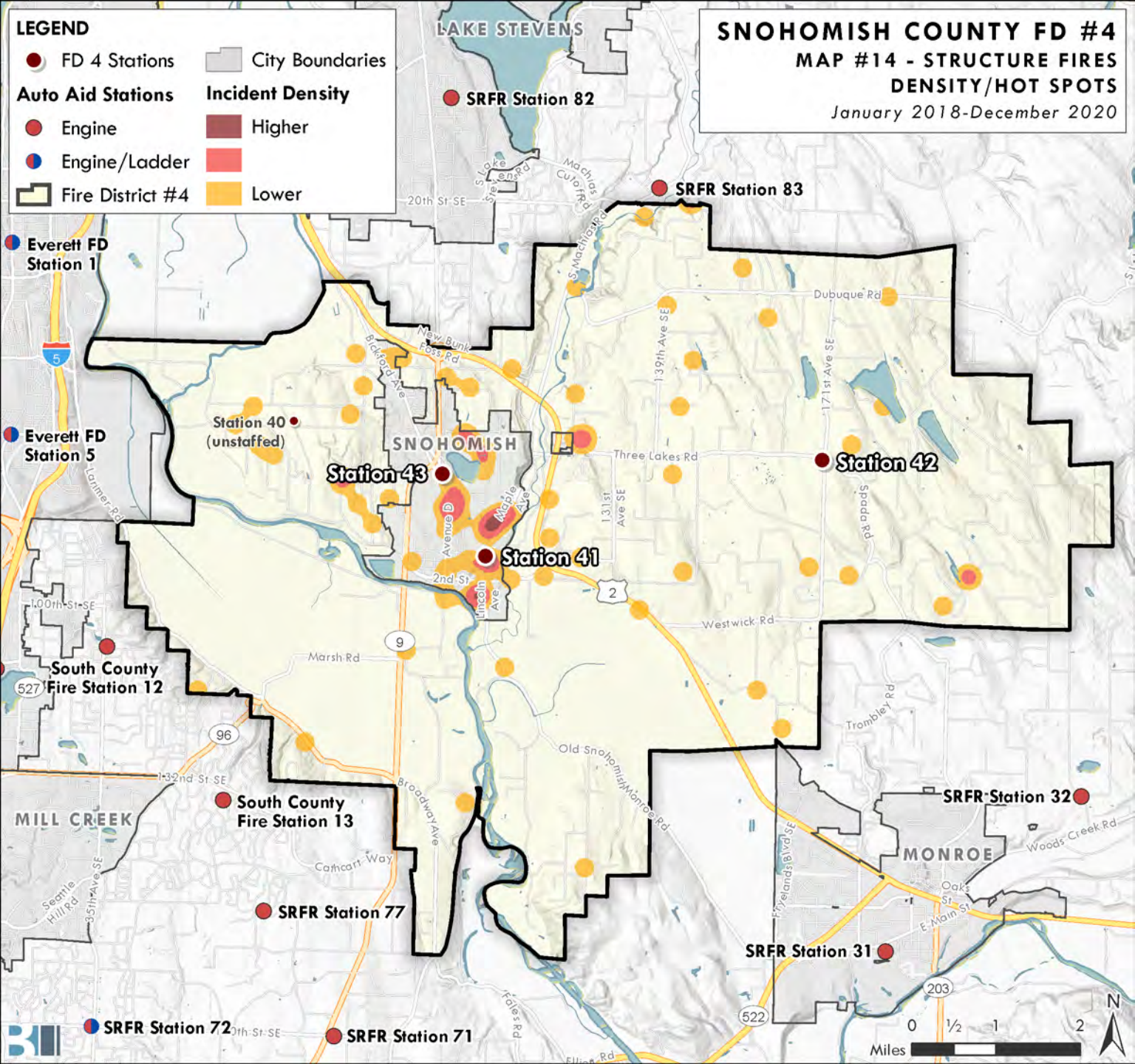
**SNOHOMISH COUNTY FD #4**  
**MAP #13 - ALL FIRES DENSITY/HOT SPOTS**  
 January 2018-December 2020



**LEGEND**

- FD 4 Stations
- City Boundaries
- Auto Aid Stations
- Incident Density
- Engine
- Higher
- Engine/Ladder
- Lower
- Fire District #4

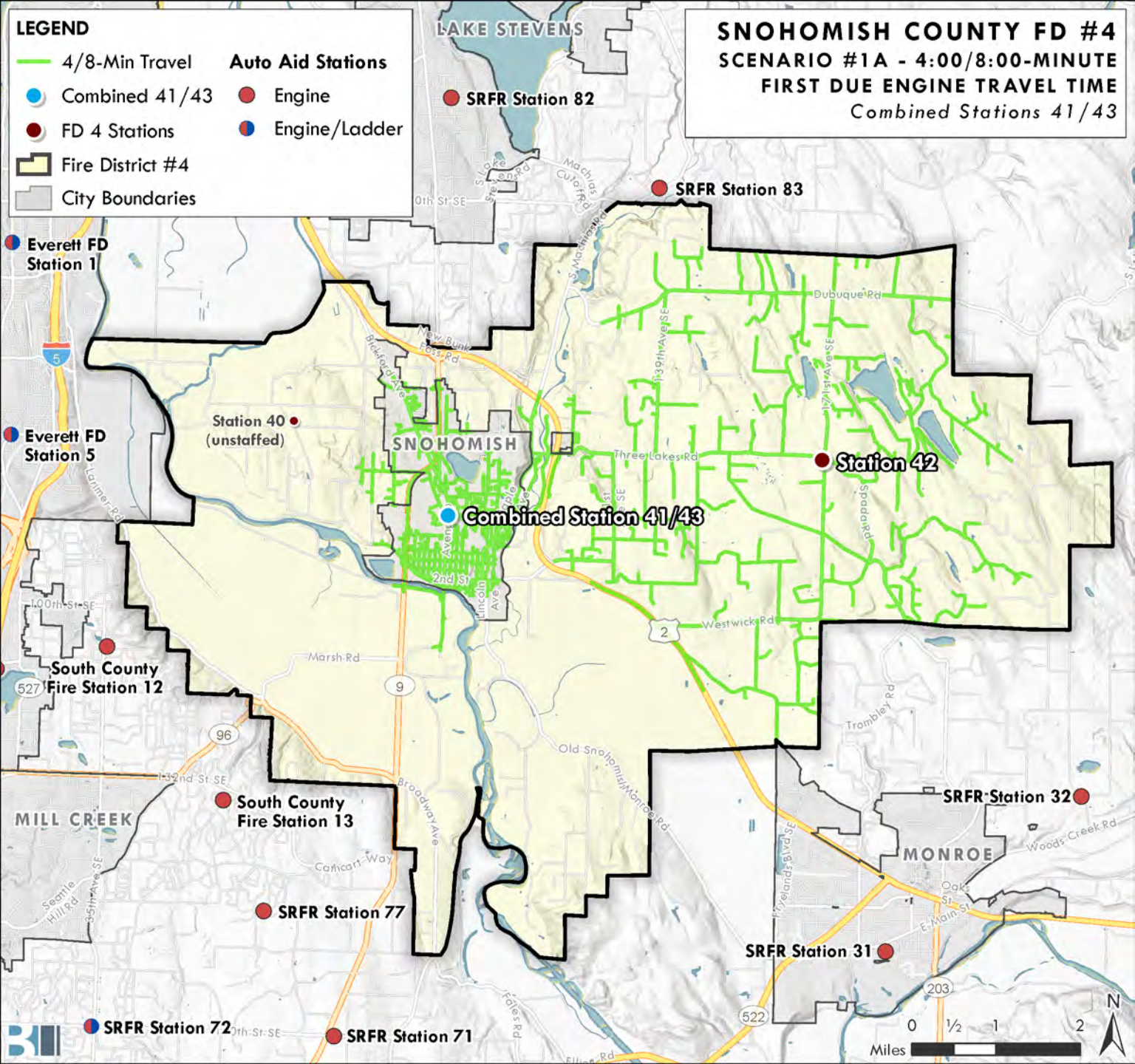
**SNOHOMISH COUNTY FD #4**  
**MAP #14 - STRUCTURE FIRES**  
**DENSITY/HOT SPOTS**  
 January 2018-December 2020



**LEGEND**

- 4/8-Min Travel
- Combined 41/43
- FD 4 Stations
- Fire District #4
- City Boundaries
- Auto Aid Stations
- Engine
- Engine/Ladder

**SNOHOMISH COUNTY FD #4  
SCENARIO #1A - 4:00/8:00-MINUTE  
FIRST DUE ENGINE TRAVEL TIME  
Combined Stations 41/43**



Everett FD Station 1

Everett FD Station 5

South County Fire Station 12

MILL CREEK

SRFR Station 72

Station 40 (unstaffed)

SNOHOMISH

Combined Station 41/43

South County Fire Station 13

SRFR Station 77

SRFR Station 71

SRFR Station 82

SRFR Station 83

Station 42

SRFR Station 32

MONROE

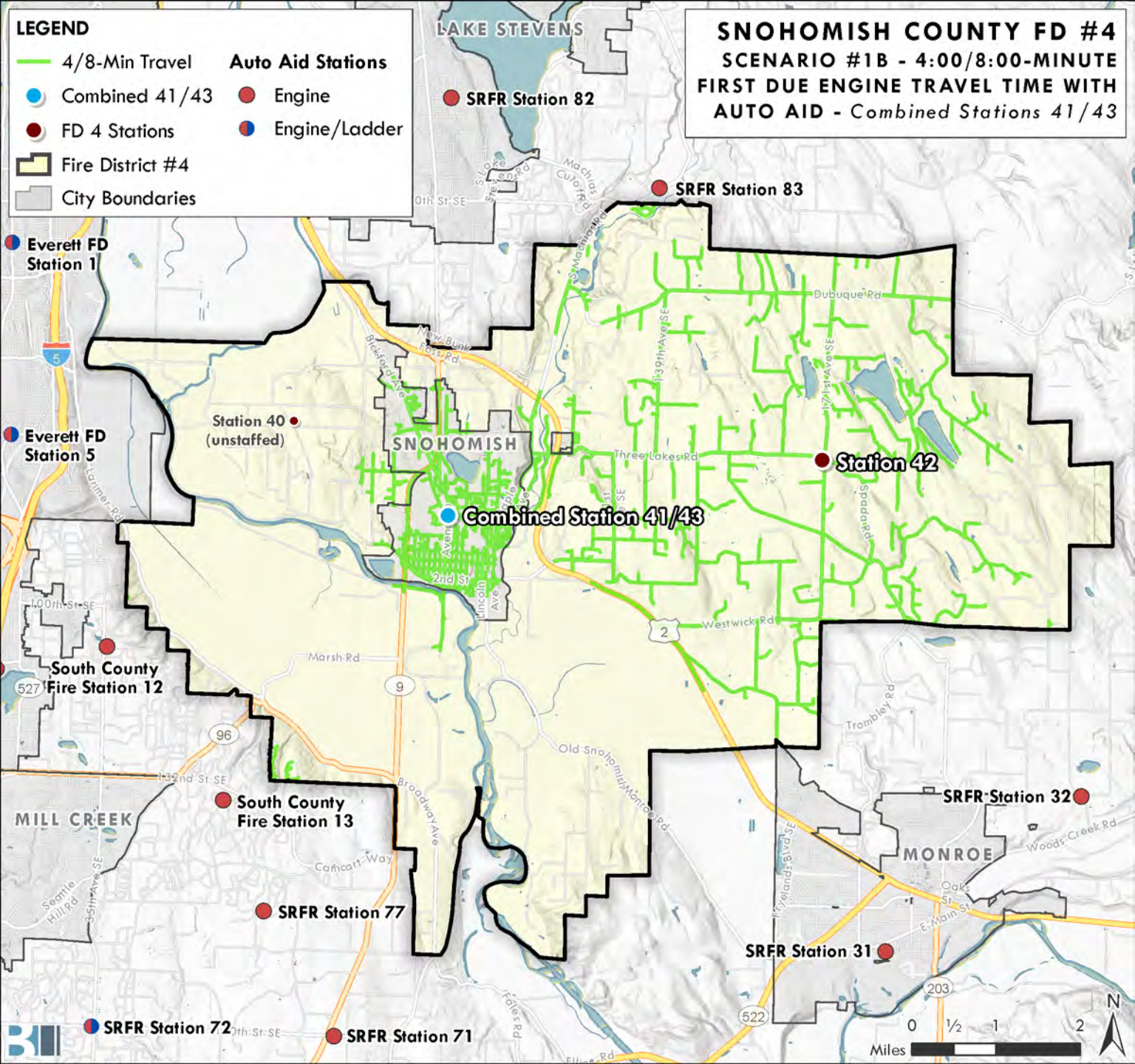
SRFR Station 31

Miles 0 1/2 1 2

**LEGEND**

- 4/8-Min Travel
- Combined 41/43
- FD 4 Stations
- Fire District #4
- City Boundaries
- Auto Aid Stations
- Engine
- Engine/Ladder

**SNOHOMISH COUNTY FD #4**  
**SCENARIO #1B - 4:00/8:00-MINUTE**  
**FIRST DUE ENGINE TRAVEL TIME WITH**  
**AUTO AID - Combined Stations 41/43**



Everett FD Station 1

Everett FD Station 5

South County Fire Station 12

MILL CREEK

SRFR Station 72

Station 40 (unstaffed)

South County Fire Station 13

SRFR Station 77

SRFR Station 71

LAKE STEVENS

SRFR Station 82

SRFR Station 83

SNOHOMISH

Combined Station 41/43

Station 42

SRFR Station 32

MONROE

SRFR Station 31

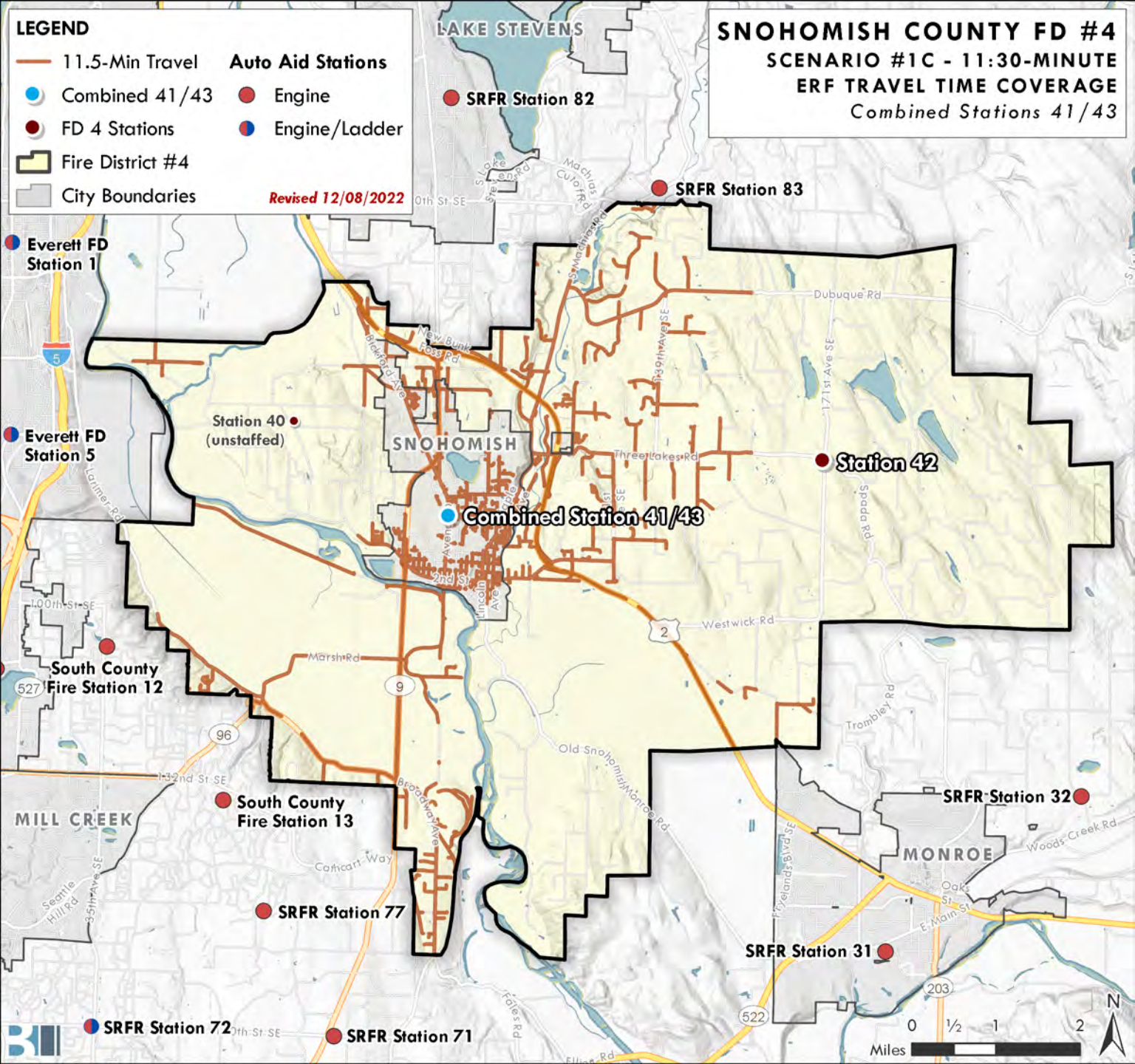


**LEGEND**

- 11.5-Min Travel
- Combined 41/43
- FD 4 Stations
- Fire District #4
- City Boundaries
- Auto Aid Stations
  - Engine
  - Engine/Ladder

Revised 12/08/2022

**SNOHOMISH COUNTY FD #4  
SCENARIO #1C - 11:30-MINUTE  
ERF TRAVEL TIME COVERAGE  
Combined Stations 41/43**



Everett FD Station 1

Everett FD Station 5

Station 40 (unstaffed)

SNOHOMISH

Combined Station 41/43

Station 42

South County Fire Station 12

MILL CREEK

South County Fire Station 13

SRFR Station 77

SRFR Station 32

MONROE

SRFR Station 31

SRFR Station 72

SRFR Station 71

Miles



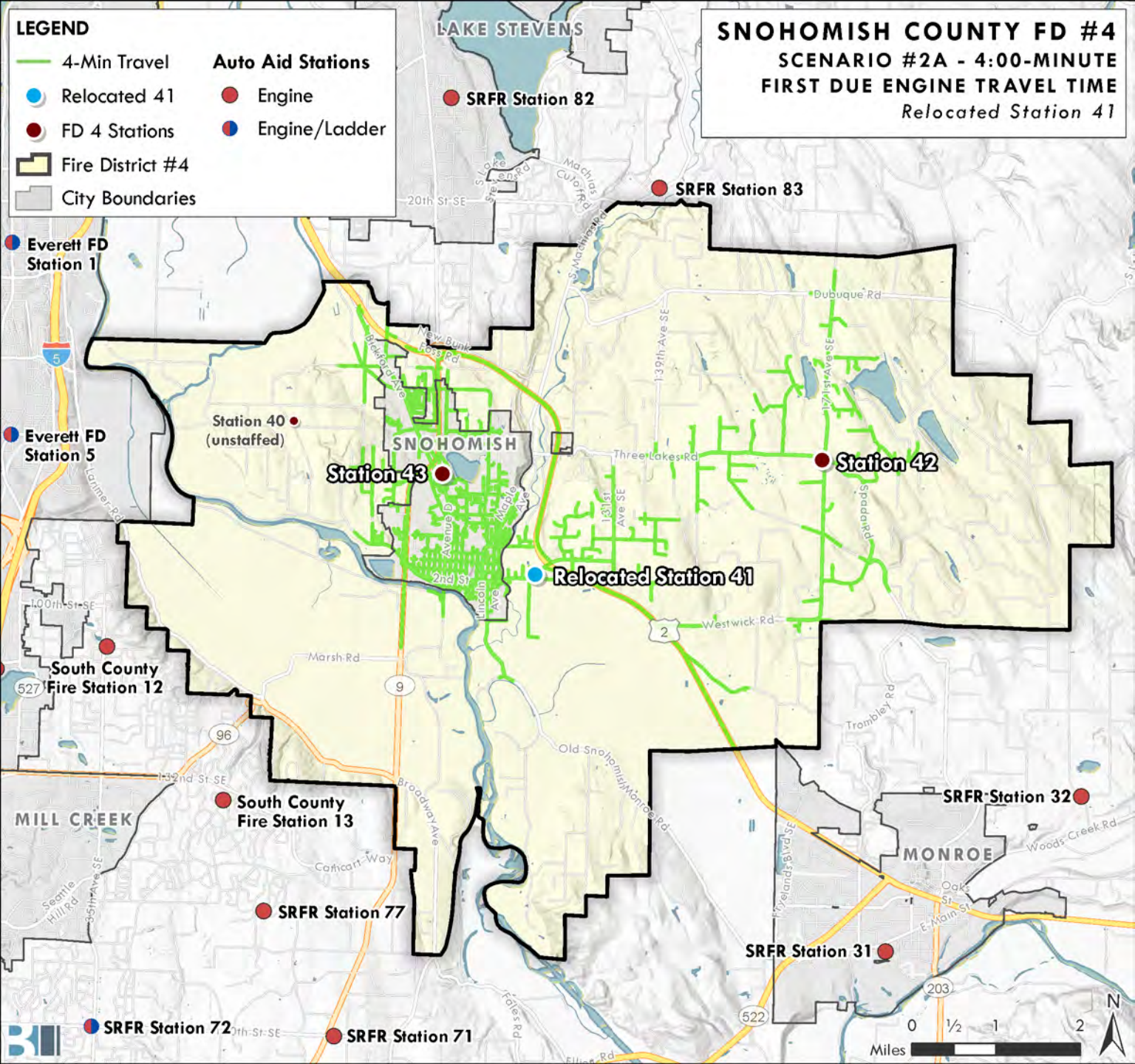
**LEGEND**

- 4-Min Travel
- Relocated 41
- FD 4 Stations
- Fire District #4
- City Boundaries

**Auto Aid Stations**

- Engine
- Engine/Ladder

**SNOHOMISH COUNTY FD #4**  
**SCENARIO #2A - 4:00-MINUTE**  
**FIRST DUE ENGINE TRAVEL TIME**  
*Relocated Station 41*

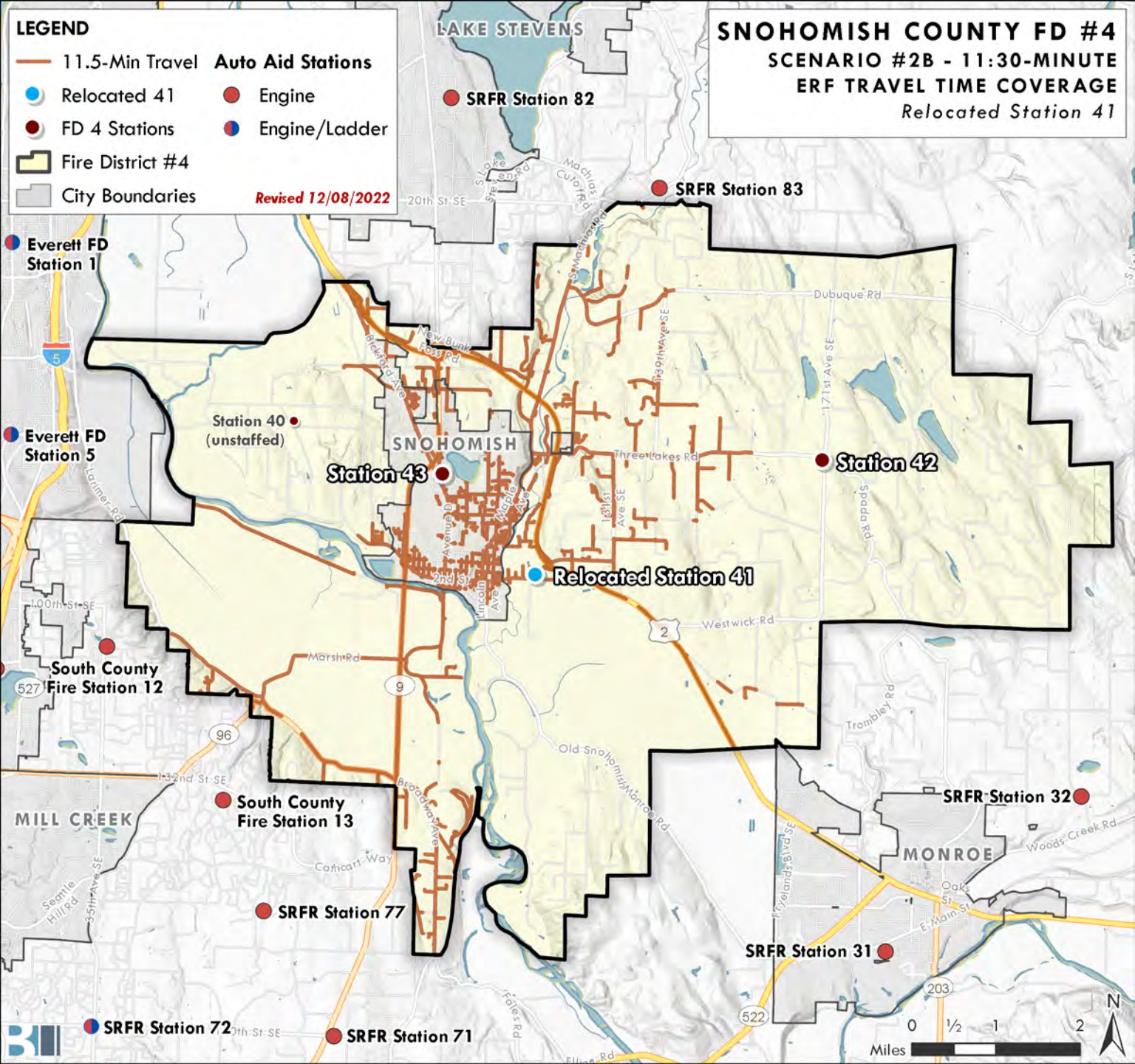


**LEGEND**

- 11.5-Min Travel
- Relocated 41
- FD 4 Stations
- Fire District #4
- City Boundaries
- Auto Aid Stations
- Engine
- Engine/Ladder

*Revised 12/08/2022*

**SNOHOMISH COUNTY FD #4**  
**SCENARIO #2B - 11:30-MINUTE**  
**ERF TRAVEL TIME COVERAGE**  
*Relocated Station 41*



0 1/2 1 2  
Miles

N